



Installing Palm Treo 650 LCD Screen

Author: cgood

This is a repair guide to access and replace the LCD screen.



Step 1 — Battery

- Place your Palm Treo 650 on a table in front of you as shown.



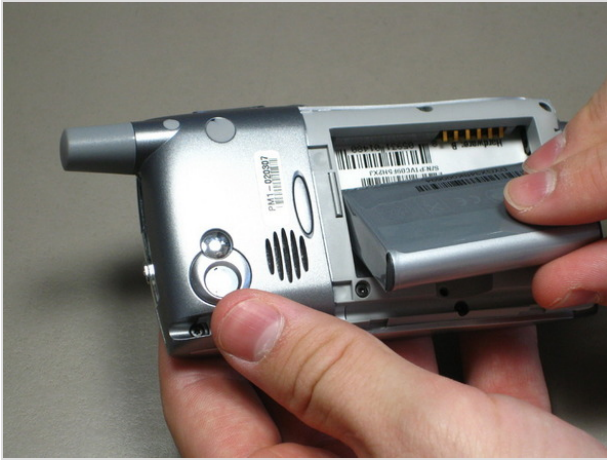
Step 2

- Flip the phone over as shown.
- Remove the stylus found on the back of your phone.



Step 3

- Remove battery cover.
- Hold down the button on the back near the middle of the phone.
- Slide the cover down.



Step 4

- Lift the edge of the battery as pictured and pull out.



Step 5 — Case

- Remove the small round rubber cover on the back of the phone.
- This will uncover a screw that will be removed in an upcoming step.



Step 6

- Unscrew six 6.9 mm black screws with a T5 Star screwdriver.
- Unscrew one 9.75 mm antenna screw with a T5 Star screwdriver.
- Pull out antenna.



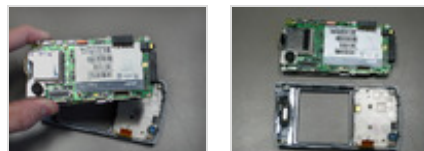
Step 7

- Pry the back cover off using a plastic opening tool or a similar tool.
- The back cover is attached by several small clips on the inside.



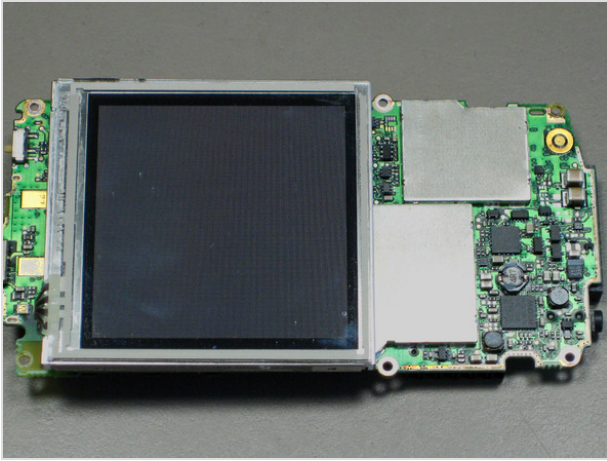
Step 8 — Motherboard

- Unclip the gray tab.
- Pull out the orange ribbon cable.
- Be careful not to remove the motherboard before disconnecting the ribbon cable so it isn't damaged.



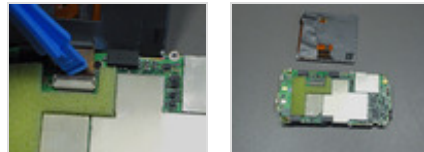
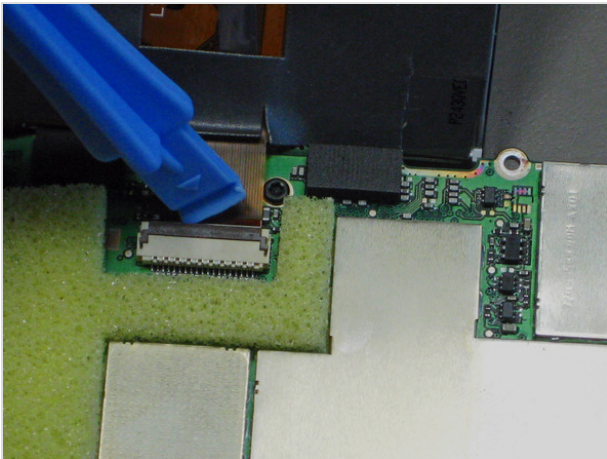
Step 9

- Pull off the mother board.



Step 10 — LCD Screen

- Lift up the LCD screen so that the ribbon strip connecting it to the motherboard can be accessed.
- Be careful not to pull off LCD screen yet.



Step 11

- Unclip the gray tab.
- Pull out the orange ribbon strip.
- Remove the LCD screen.

To reassemble your device, follow these instructions in reverse order.

This document was last generated on Feb 29, 2012.