



Installing Nintendo Wii Wi-Fi Board

Author: iDeleted

Tools used in this guide

- [Metal Spudger](#) (1)
- [Phillips #00 Screwdriver](#) (1)
- [Phillips #1 Screwdriver](#) (1)
- [Tri-wing Screwdriver](#) (1)
- [Tweezers](#) (1)

The steps in this guide outline the procedure to remove the Wi-Fi board in the Wii. The Wi-Fi and Bluetooth antenna cables both attach to this board, so this guide can also be used to replace them.



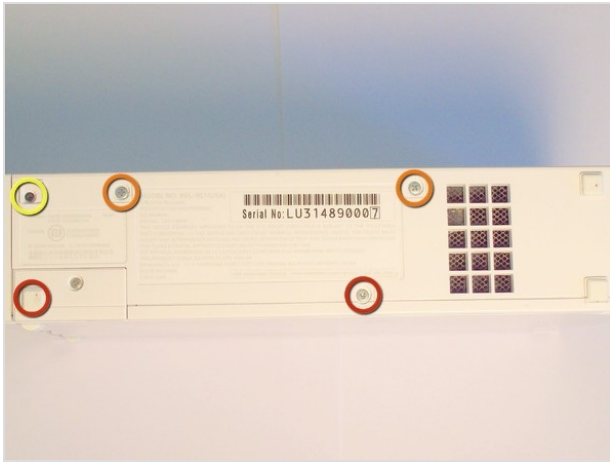
Step 1 — Outer Case

- Loosen Phillips screw on bottom of Wii to remove battery case.
- The screw is captive to the battery case and will not come out; leave the two connected.



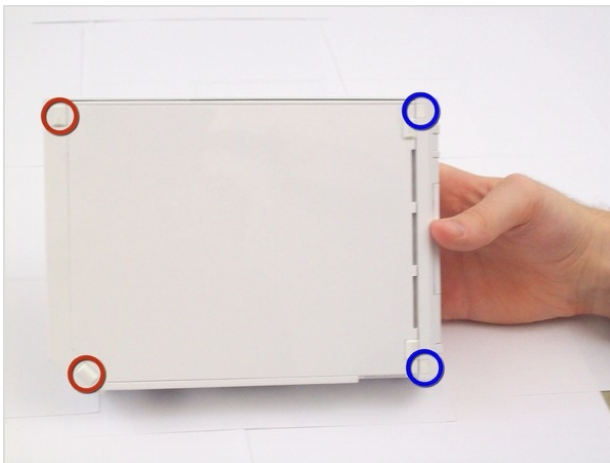
Step 2

- On the bottom side of the Wii, use metal spudger to remove the following:
 - One rubber foot
 - Three plastic stickers.



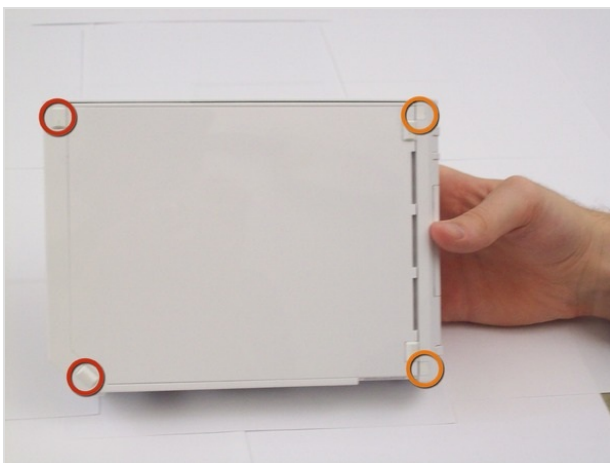
Step 3

- Remove the following screws:
 - Two 8.1 mm silver tri-wing screws, one under battery case and one under bottom right sticker.
 - Two 5.0 mm silver Phillips screws, under top center and top right stickers.
 - One 5.8 mm black Phillips screw, under top left foot.



Step 4

- On the right side of the Wii, use the metal spudger to remove the following:
 - Two rubber feet.
 - Two plastic stickers.



Step 5

- Remove the following screws:
 - Two 8.2 mm silver tri-wing screws, under top left and bottom left feet.
 - Two 8.2 mm black tri-wing screws, under top right and bottom right stickers.



Step 6

- Remove the two doors on top of the Wii by opening them, then applying pressure behind the hinges. The hinges should pop out without much resistance.



Step 7

- Remove the following screws from the top of the Wii:
 - One 5.9 mm black Phillips screw, closest to front of Wii.
 - Two 4.0 mm black Phillips screws.



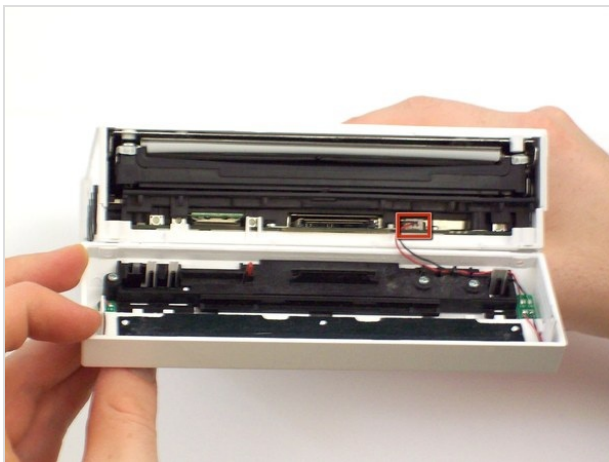
Step 8

- Remove the black plastic shield from the top of the Wii. Slide it away from the front of the Wii to free the covered end.



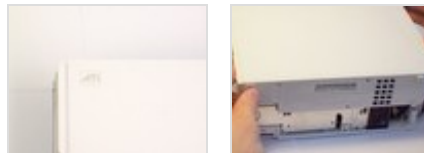
Step 9

- Remove the following screws from under the black plastic shield:
 - Two 8.2 mm silver tri-wing screws.
 - Two 5.0 mm silver Phillips screws.



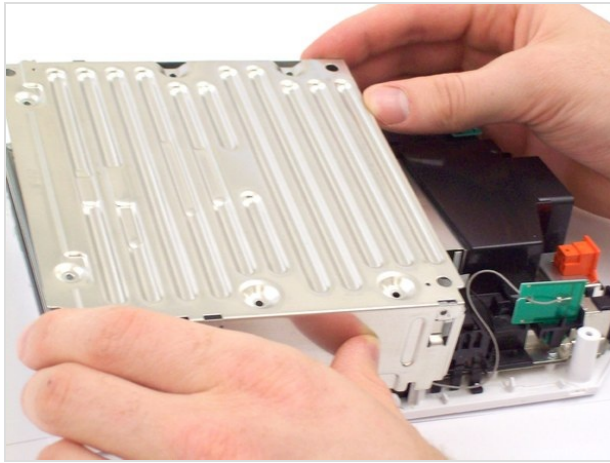
Step 10

- The faceplate is now loose, but is still connected to the body by the faceplate LED power cable.
- Open faceplate and disconnect cable from the connector. Using tweezers may make this easier. Set faceplate aside.



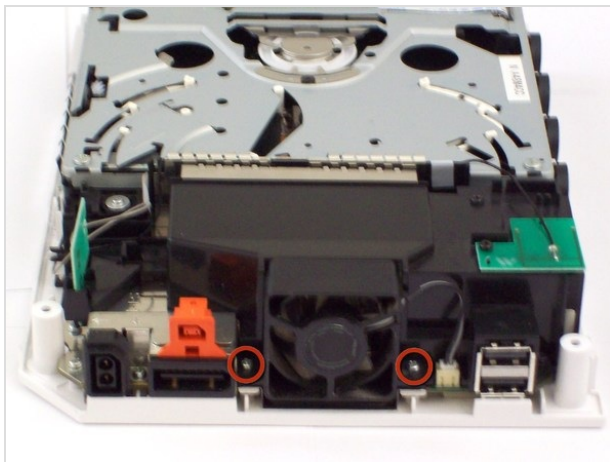
Step 11

- Set the Wii on its right side, with the ATI label in the upper left corner.
- The plastic outer case is now loose. Pull it straight up and off the Wii.



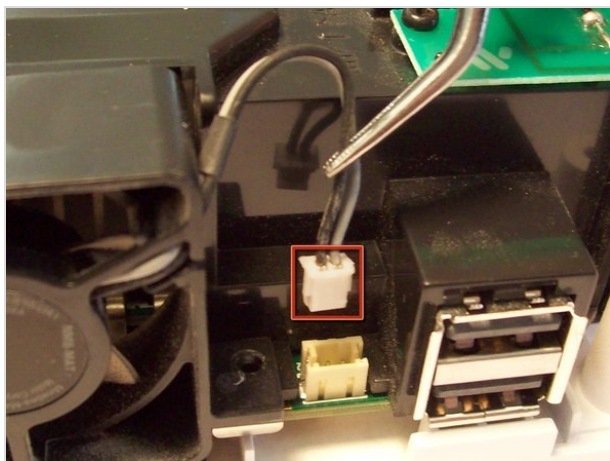
Step 12

- The inner metal shield is now loose as well. Lift it straight up and off the Wii; this may require some wiggling.



Step 13 — Fan

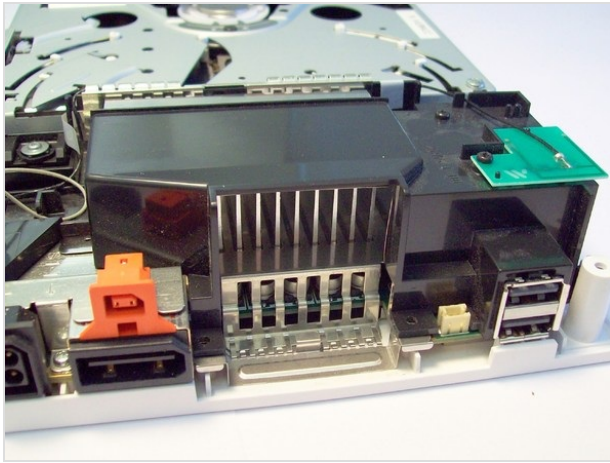
- Remove the two 11.2 mm silver Phillips screws securing the fan to the Wii.



Step 14

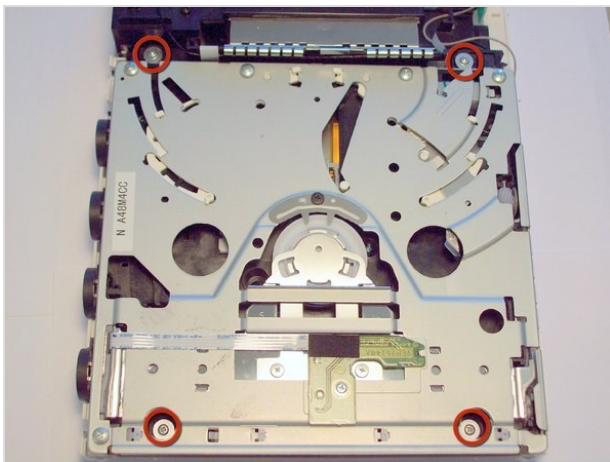
- Disconnect the cooling fan power cable.
- Pull directly up on the cable to avoid damaging the cable connector.





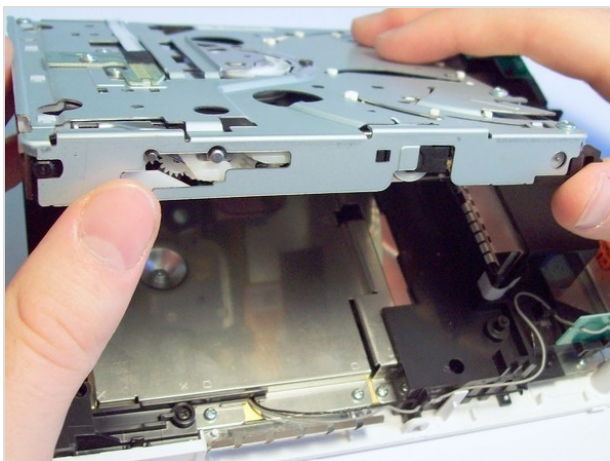
Step 15

- Remove the fan.



Step 16 — Optical Drive

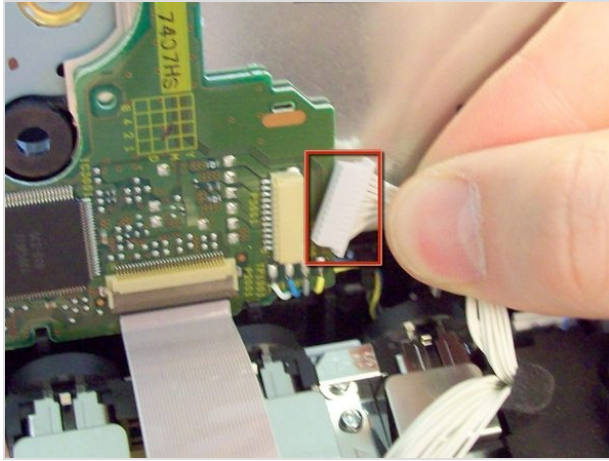
- Remove the four 9.2 mm silver screws mounting the optical drive to the Wii.
- A magnetic screwdriver or pair of tweezers is very helpful to ensure the recessed screws make it all the way out.



Step 17

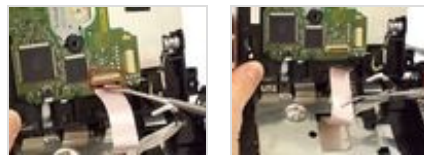
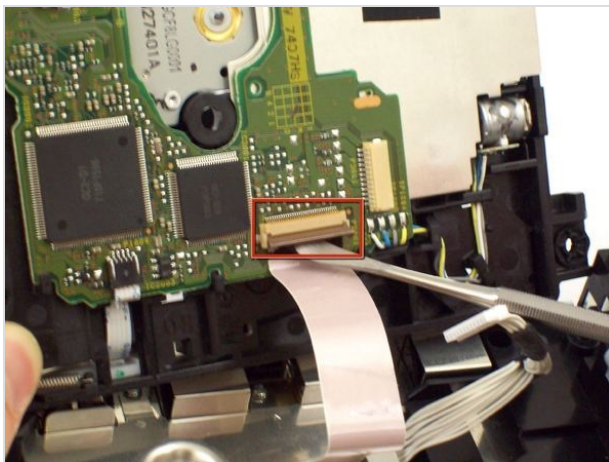
- The optical drive is loose, but is still connected by a power cable and a data cable.
- With the Wii aligned as pictured, rotate the near end up to reveal the connections underneath.





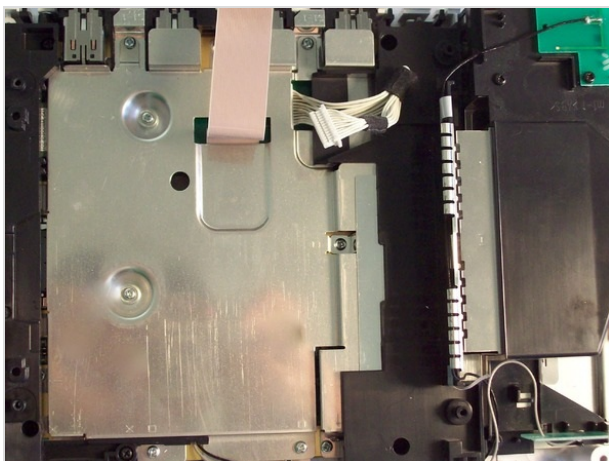
Step 18

- Disconnect the 12-pin white power cable connector.



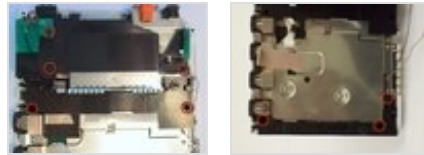
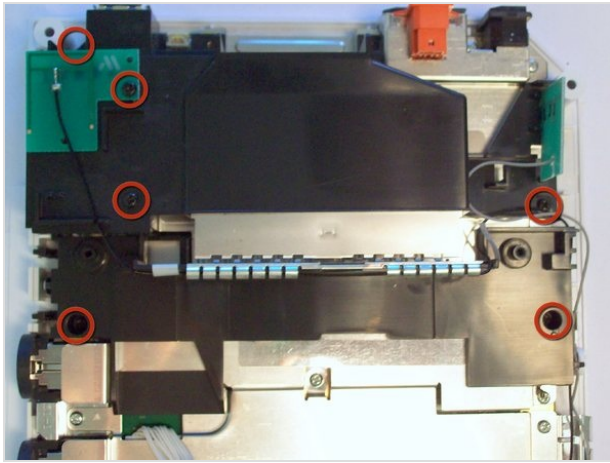
Step 19

- Flip up the tab on the optical drive data cable's ZIF connector on the board on the underside of the drive.
- Remove the optical drive data cable from the drive.



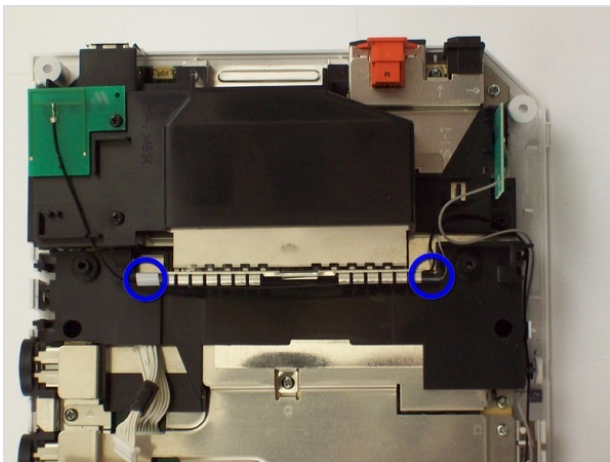
Step 20

- Remove the optical drive from the Wii.



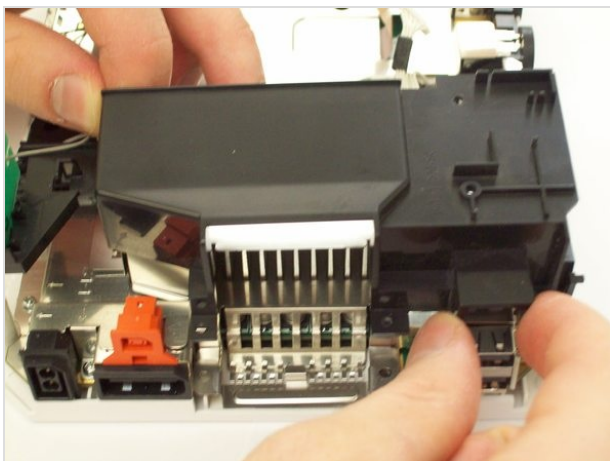
Step 21 — Wi-Fi Board

- Remove the nine 10.0 mm black Phillips screws securing the black plastic mounting brackets to the Wii.



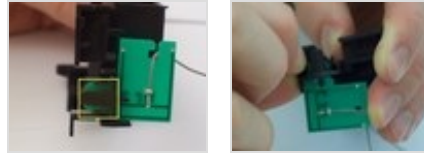
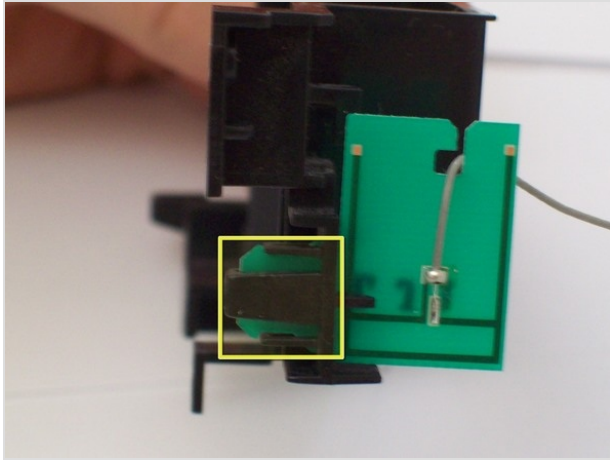
Step 22

- Free the Bluetooth antenna by undoing the tape binding the black antenna cable to the Wii.
- The Bluetooth antenna cable is still connected to the Wii; set the antenna aside nearby.



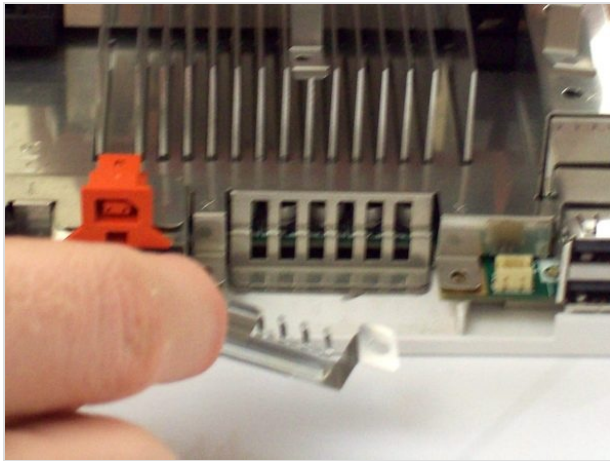
Step 23

- Lift the mounting bracket off the heat sink.



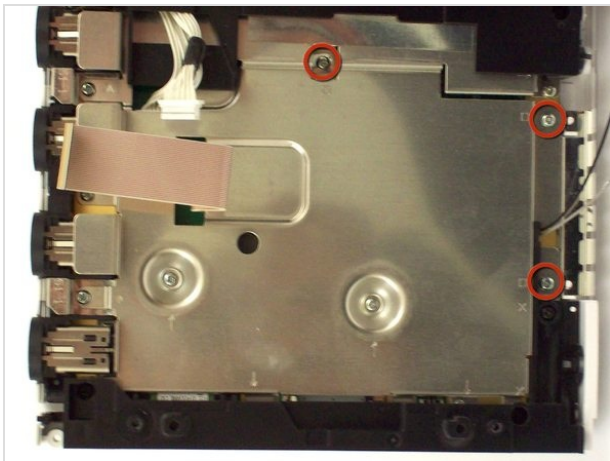
Step 24

- Carefully remove the Wi-Fi antenna from the mounting bracket by spreading the two small tabs that hold the antenna board in place and pulling the board straight out.



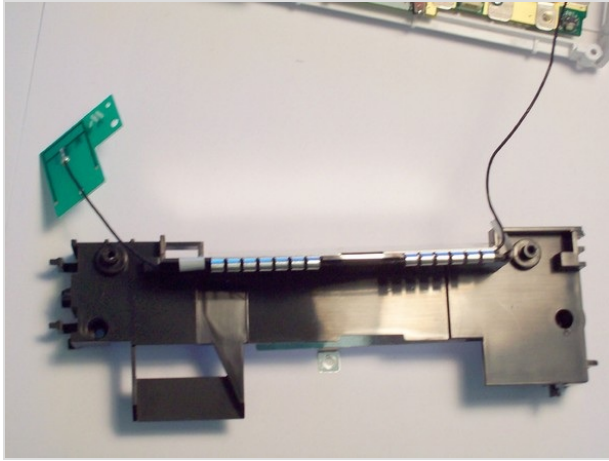
Step 25

- Remove the small metal bracket from below the fan mount.
- Remove the metal heat sink shield.



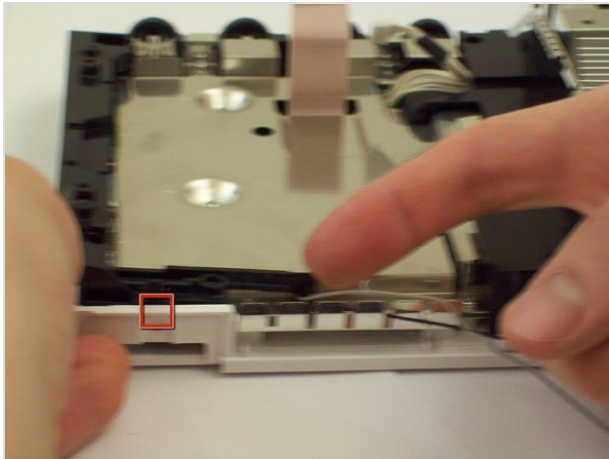
Step 26

- Remove the three 7.25 mm silver Phillips screws from the holes marked " " .



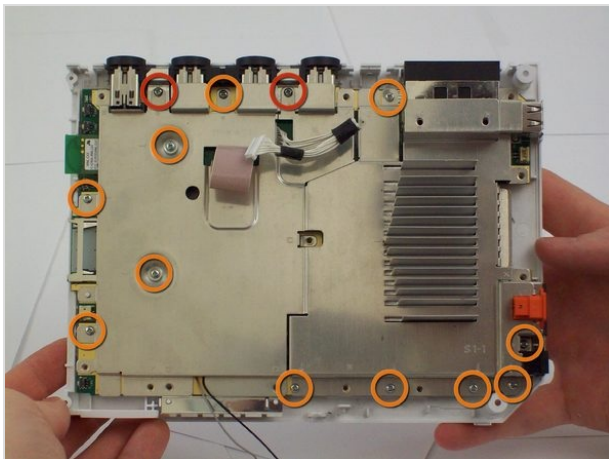
Step 27

- Remove the mounting bracket that holds the Bluetooth antenna cable.



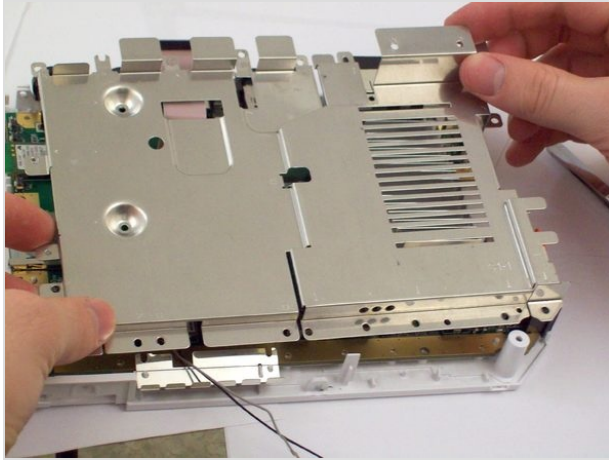
Step 28

- There is a small silver nut loosely contained by the left black plastic bracket; be careful not to lose it.
- Lift the left black plastic bracket off the Wii, being aware of the silver nut. Pull the bracket's tab toward you where the antenna wires protrude to remove it.



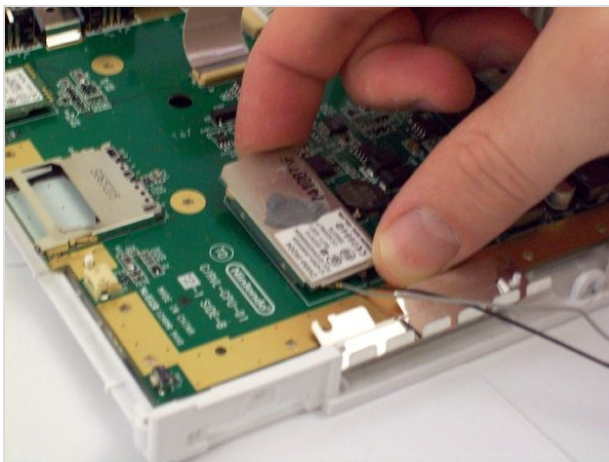
Step 29

- Remove the following screws:
 - Two 11.3 mm silver Phillips screws from holes marked "■".
 - 11 7.25 mm silver Phillips screws from holes marked "↓".



Step 30

- Lift the main EMI shield off the Wii's motherboard.



Step 31

- The Wi-Fi board is connected to the motherboard by a connector and some adhesive. Pull firmly upward on the board and it will pop off the motherboard.
- The Bluetooth and Wi-Fi antennas are connected to the bottom of the Wi-Fi board, and are easily removed by using a spudger to lift them off their respective sockets.



To reassemble your device, follow these instructions in reverse order.

This document was last generated on Feb 23, 2012.