



# Installing Nintendo Wii Outer Case

Author: iDeleted

## Tools used in this guide

- [Metal Spudger](#) (1)
- [Phillips #00 Screwdriver](#) (1)
- [Tri-wing Screwdriver](#) (1)

This guide shows the removal of the faceplate and right panel of the outer case. The motherboard is attached to the left panel, so follow the guide for [Installing Nintendo Wii Motherboard](#) to remove the entire outer case.



## Step 1 — Outer Case

- Loosen Phillips screw on bottom of Wii to remove battery case.
- The screw is captive to the battery case and will not come out; leave the two connected.



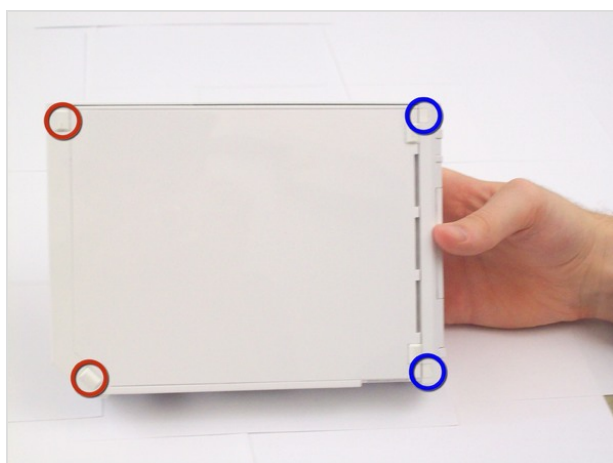
## Step 2

- On the bottom side of the Wii, use metal spudger to remove the following:
  - One rubber foot
  - Three plastic stickers.



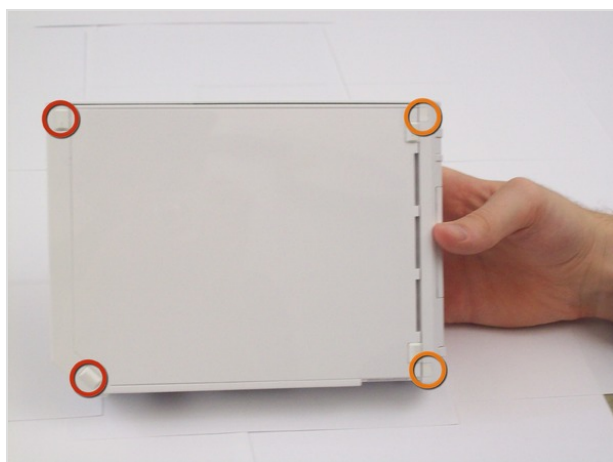
## Step 3

- Remove the following screws:
  - Two 8.1 mm silver tri-wing screws, one under battery case and one under bottom right sticker.
  - Two 5.0 mm silver Phillips screws, under top center and top right stickers.
  - One 5.8 mm black Phillips screw, under top left foot.



## Step 4

- On the right side of the Wii, use the metal spudger to remove the following:
  - Two rubber feet.
  - Two plastic stickers.



## Step 5

- Remove the following screws:
  - Two 8.2 mm silver tri-wing screws, under top left and bottom left feet.
  - Two 8.2 mm black tri-wing screws, under top right and bottom right stickers.



## Step 6

- Remove the two doors on top of the Wii by opening them, then applying pressure behind the hinges. The hinges should pop out without much resistance.



## Step 7

- Remove the following screws from the top of the Wii:
  - One 5.9 mm black Phillips screw, closest to front of Wii.
  - Two 4.0 mm black Phillips screws.



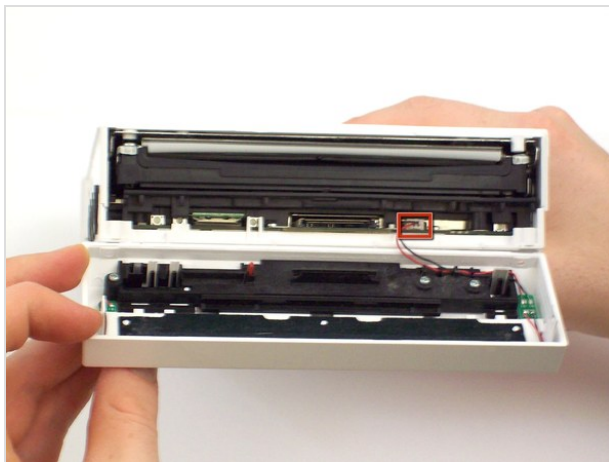
## Step 8

- Remove the black plastic shield from the top of the Wii. Slide it away from the front of the Wii to free the covered end.




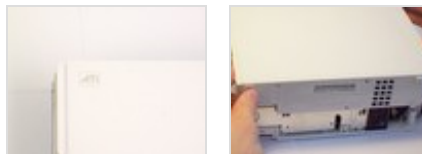
## Step 9

- Remove the following screws from under the black plastic shield:
  - Two 8.2 mm silver tri-wing screws.
  - Two 5.0 mm silver Phillips screws.



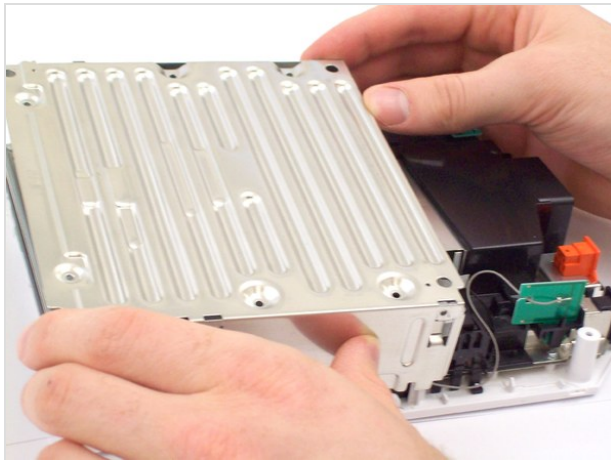
## Step 10

- The faceplate is now loose, but is still connected to the body by the faceplate LED power cable. 
- Open faceplate and disconnect cable from the connector. Using tweezers may make this easier. Set faceplate aside.



## Step 11

- Set the Wii on its right side, with the ATI label in the upper left corner.
- The plastic outer case is now loose. Pull it straight up and off the Wii.



### **Step 12**

- The inner metal shield is now loose as well. Lift it straight up and off the Wii; this may require some wiggling.

To reassemble your device, follow these instructions in reverse order.

This document was last generated on May 15, 2012.