



# Installing iBook G3 Clamshell Display

Author: iRobot

## Tools used in this guide

- [Coin](#) (1)
- [Phillips #0 Screwdriver](#) (1)
- [Small Flathead Screwdriver](#) (1)
- [T8 Torx Screwdriver](#) (1)

## Parts relevant to this guide

- [iBook Clamshell Display Assembly \(Blueberry\)](#) (1)

Change out the entire display assembly, including the inverter, hinges, and plastic casing.



## Step 1 — Battery

- Use a coin to turn both battery locking screws 90 degrees to the left.
- Remove the battery cover.
- Remove the battery from the computer by pulling up on the plastic tab.




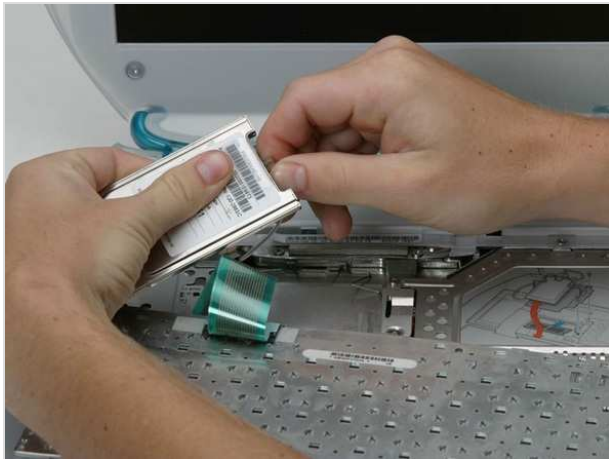
## Step 2 — Airport Card

- Pull the keyboard release tabs toward you and lift up on the keyboard until it pops free. Note that the keyboard ribbon is still attached to the logic board, so you cannot completely remove the keyboard yet.
- If the keyboard does not come free, use a small flathead screwdriver to turn the keyboard locking screw (between F4 and F5 key) 180 degrees in either direction and try again.
- Rotate the keyboard away from the screen and rest it face-down on the trackpad area.



## Step 3

- If your computer does not have an airport card, you can skip the next two steps. 
- Grasp the clear plastic tab on the airport card and pull up and toward the display.



## Step 4

- Hold the airport card in one hand and use your other hand to remove the antenna cable.



## Step 5 — Keyboard

- Remove the two Phillips screws that secure the RAM shield.



## Step 6

- Grasp the wire metal bracket on top of the RAM shield and pull upward to remove the shield.



## Step 7

- Pull up the keyboard connector cable by its clear plastic loop.



## Step 8 — Upper Case

- Use a straightened paperclip to manually eject the CD-ROM tray.



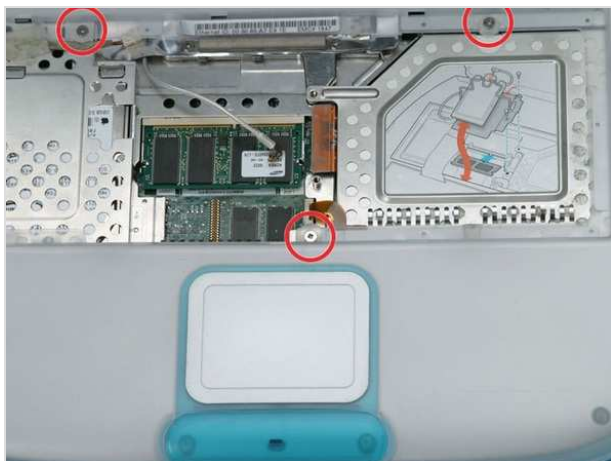
## Step 9

- Turn the computer over so that the bottom is facing up.
- Remove the following Torx screws:
  - Four short T8 Torx near the battery compartment.
  - Two long T8 Torx near the hinges.



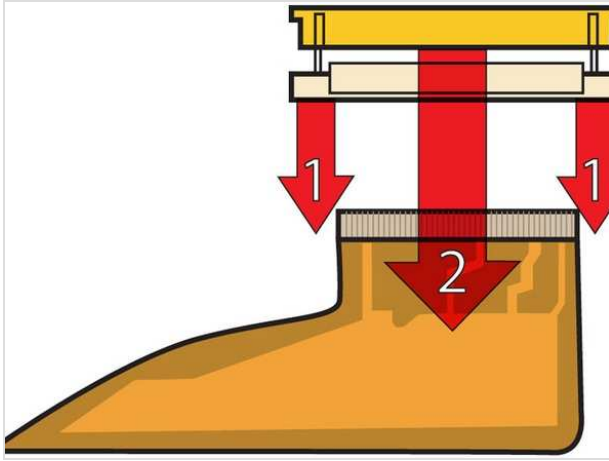
## Step 10

- Pull the CD-ROM drive tray partly out.
- Remove the silver Phillips screw from the plastic casing.




## Step 11

- Turn the computer over.
- Remove the three Phillips screws.



## Step 12

- This is a diagram of the trackpad ribbon clamp connector you will disconnect in the next step. 
- 1) With your fingernails, grasp the locking bar on either side and pull up a small amount (about 1/16" or 2 mm).
- 2) After disengaging the locking bar, slide the cable out of the connector.




## Step 13

- Loosen the trackpad clamp by pulling the top piece up slightly, freeing the trackpad ribbon.
- Slide the orange trackpad ribbon out of the clamp.



## Step 14

- Do not lift the upper case too far without first disconnecting the audio cable. 
- Push out the rim of the lower case and pull up on the upper case, grasping it just to the left of the optical drive.
- Repeat the above step on the upper left corner of the upper case, grasping the bottom left corner of the upper case.



## Step 15

- Disconnect the audio cable.



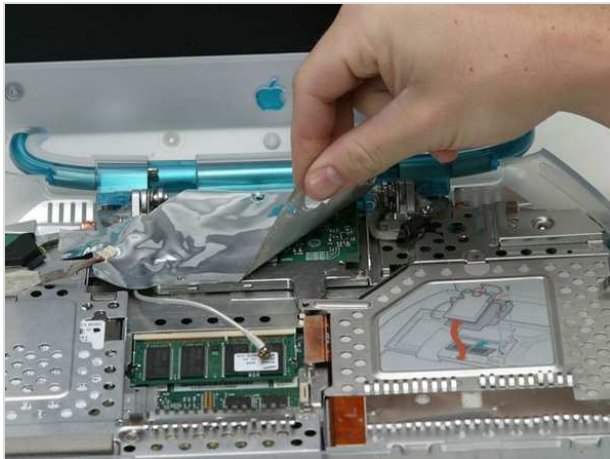
## Step 16

- Grasp the upper case on either side of the keyboard space and rotate up and away from the screen.
- You may be thinking you're about to break your upper case. Not to worry - the tabs holding the upper and lower cases together are very strong. Simply apply even pressure and continue to rotate the upper case up and away from the screen until it comes free.



## Step 17 — Modem

- Remove the following Phillips screws:
  - Remove the longer Phillips screw from the middle-rear of the modem shield.
  - Remove the three identical Phillips screws, two on either side of the EMI fingers, and the remaining one on the right side of the modem shield.
  - Remove the larger Phillips screw that secures the EMI fingers to the modem board.
- Remove the EMI fingers.



## Step 18

- Peel the modem shield away from the metal framework below, working from the right front and moving to the left.



## Step 19

- Remove the Phillips screw from the left side of the modem.
- Pry up the right side of the modem.



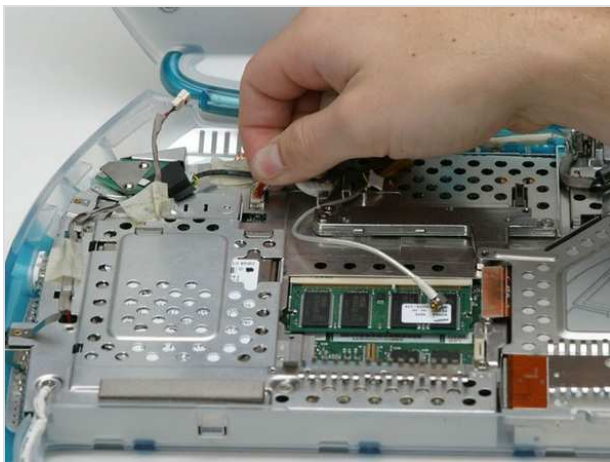
## Step 20

- Lift the modem partially out and disconnect the cable on the left side.



## Step 21 — Display

- Remove the Phillips screw from the left hinge.
- Peel up the airport cable from beneath the yellow tape.



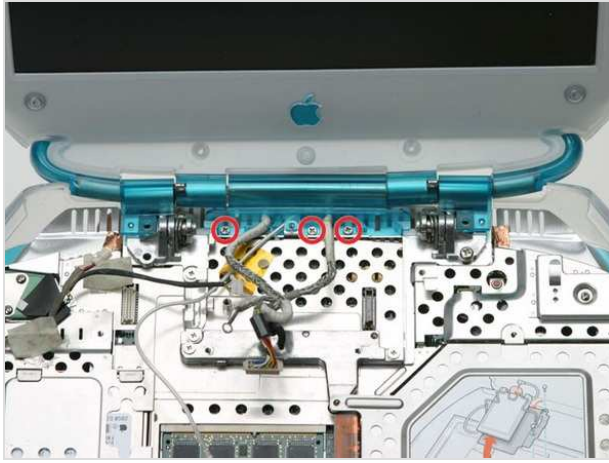
## Step 22

- Disconnect the large display data cable from the logic board and deroute it from the plastic and metal tabs.



## Step 23

- Disconnect the backlight cable from the logic board and deroute it.



## Step 24

- Remove the three small Phillips screws from the clutch cover.



## Step 25

- Finally, support the display with one hand while unscrewing the last Phillips screw from the right hinge (push the display gently down to avoid putting pressure on the screw).
- Remove the display assembly.


To reassemble your device, follow these instructions in reverse order.

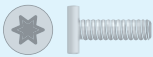
This document was last generated on Feb 23, 2012.

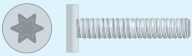
# iBook Clamshell Screw Guide





↓


 Keyboard  
2 Phillips Screws


 Upper Case (bottom)  
4 T8 Torx

 Upper Case (bottom)  
2 T8 Torx

 Upper Case (by optical drive)  
1 Phillips

 Upper Case  
3 Phillips

 Optical Drive  
1 5mm Standoff

 Modem  
2 Phillips

↙ ↘





To organize your screws, simply place each screw in the appropriate box as you remove them from your laptop.


If you are not planning on immediately reassembling your laptop, you may want to tape the screws to this paper.

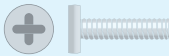
Due to model variations, the screws you remove may differ slightly from this guide.


↓


 Modem  
3 Phillips


 Modem  
1 Phillips

 Display (clutch cover)  
3 Phillips

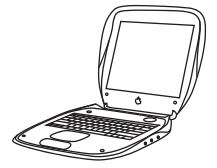
 Display  
2 Phillips


 EMI Shield (RJ-11 board)  
2 Phillips


 EMI Shield (red & green)  
3 Phillips


 EMI Shield (orange)


↓




  
EMI Shield (yellow)  
1 Phillips

  
EMI Shield (blue)  
1 Phillips

  
Charger Board  
1 Phillips

  
Hard Drive  
3 5mm Standoffs

  
Logic Board (red)  
1 Phillips





To organize your screws, simply place each screw in the appropriate box as you remove them from your laptop.


If you are not planning on immediately reassembling your laptop, you may want to tape the screws to this paper.

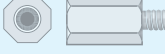
Due to model variations, the screws you remove may differ slightly from this guide.



  
Logic Board (orange)  
1 5mm Standoff

  
Logic Board (yellow)  
1 5mm Standoff

  
Logic Board (green)  
1 5mm Standoff

  
Logic Board (blue)  
1 5mm standoff

