



Installing Mac mini Model A1176 Bluetooth Board

Author: Walter Galan


Tools used in this guide

- [1.5" Thin Putty Knife](#) (1)
- [Phillips #00 Screwdriver](#) (1)
- [Spudger](#) (1)

Replace a faulty Bluetooth board using this guide.




Step 1 — Top Housing

- You can skip this step if you bought your [putty knife from iFixit](#). Putty knives purchased from iFixit come with pre-ground edges. 
- You'll need a putty knife in order to open the case. A 1.5 inch thin putty knife will work well, but you'll want to grind the edge down. Rub the putty knife's short edge back and forth on a sheet of all purpose rough grit sandpaper (100 grit will work fine) until it attains a beveled edge.



Step 2

- Carefully insert a putty knife into the crevice in between the top cover and bottom housing. Start on the left side first. Push the blade down until you meet firm resistance (roughly 3/8 of an inch).
- Gently enlarge the existing crevice by prying the handle of the putty knife downward and away from the mini.
- It helps to start in the middle, then work along the edge until the bottom housing pops up slightly. 



Step 3

- Next insert the putty knife into the crevice on the optical drive slot side of the computer.
- Pry the putty knife downward while working along the edge of the mini until the bottom housing further separates from the top housing.



Step 4

- Repeat the same procedure as the past few steps for the right side of the mini.
- At this point, there should be a noticeable gap between the bottom and top housing around the perimeter of the mini.
- Turn the mini over.



Step 5

- Gently lift the top housing straight up off the mini and set it aside.
- It may be necessary to wiggle the top housing while lifting it off the bottom housing. If any of the tabs get stuck on the top housing, use the putty knife to free them.





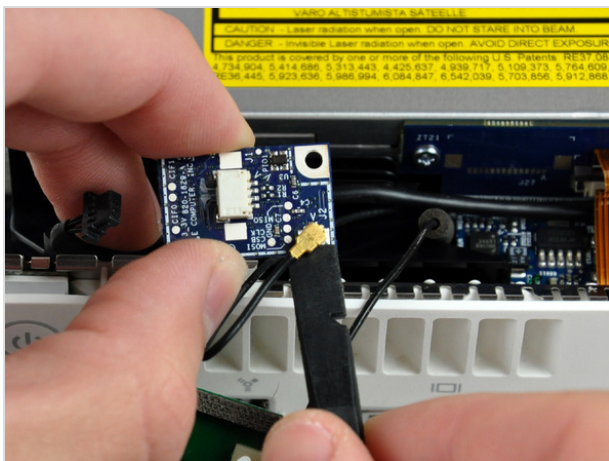
Step 6 — Bluetooth Board

- Remove the single Phillips screw securing the Bluetooth board to the internal frame.



Step 7

- Disconnect the Bluetooth cable connector by pulling it straight away from its socket.



Step 8

- Use the flat end of a spudger to pry the Bluetooth antenna cable connector up off the Bluetooth board.

To reassemble your device, follow these instructions in reverse order.