



Installing Mac mini Model A1283 Audio Board

Author: Walter Galan


Tools used in this guide

- [1.5" Thin Putty Knife](#) (1)
- [Phillips #00 Screwdriver](#) (1)
- [Spudger](#) (1)

Replace your audio board to regain functionality of your speakers and microphone.



Step 1 — Top Housing

- You can skip this step if you bought your [putty knife from iFixit](#). Putty knives purchased from iFixit come with pre-ground edges. 
- You'll need a putty knife in order to open the case. A 1.5 inch thin putty knife will work well, but you'll want to grind the edge down. Rub the putty knife's short edge back and forth on a sheet of all purpose rough grit sandpaper (100 grit will work fine) until it attains a beveled edge.



Step 2

- Carefully insert a putty knife into the crevice in between the top cover and bottom housing. Start on the left side first. Push the blade down until you meet firm resistance (roughly 3/8 of an inch).
- Gently enlarge the existing crevice by rotating the putty knife downward and away from the mini.



Step 3

- Repeat the prying motion until a portion of the bottom housing has been nudged upward.



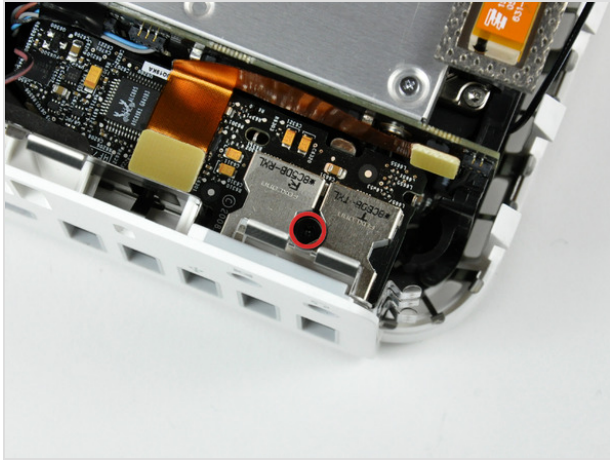
Step 4

- Repeat the same prying procedure on the right side.



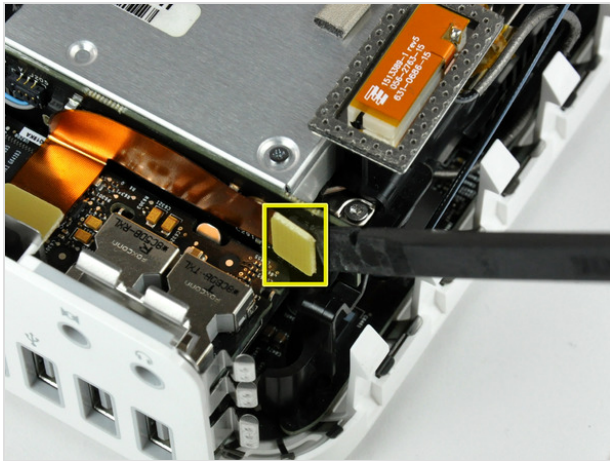
Step 5

- The top cover should now be marginally separated from the bottom housing. Use your fingers to completely separate the two, starting with the I/O side of the mini.



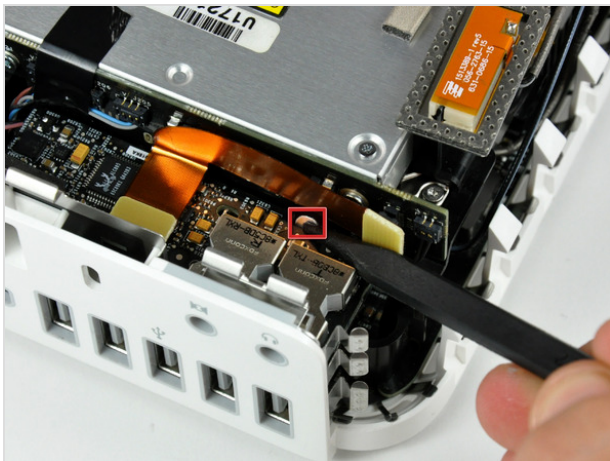
Step 6 — Audio Board

- Remove the single Phillips screw between the headphone and microphone jacks on the audio board.



Step 7

- Use the flat end of a spudger to pry the audio ribbon cable connector off the interconnect board.



Step 8

- Use the tip of a spudger to depress the audio board retaining clip (shown in red) to release the audio board from the bottom housing.
- Lift the audio board from its free end and remove it from the mini.
- Don't forget to transfer the audio ribbon cable to your new audio board.



To reassemble your device, follow these instructions in reverse order.