



Installing PowerBook G4 Aluminum 17" 1.67 GHz (High-Res) Modem

Author: Walter Galan

Tools used in this guide

- [4mm Nut Driver](#) (1)
- [Phillips #00 Screwdriver](#) (1)
- [Spudger](#) (1)
- [T8 Torx Screwdriver](#) (1)

Parts relevant to this guide

- [G4 Aluminum 15" 1.33/1.5/1.67 GHz Modem](#) (1)

Replace your modem to regain dial-up internet access.



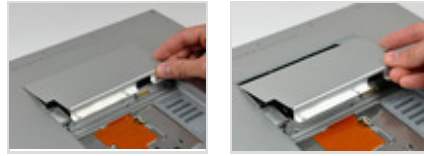
Step 1 — Battery

- Use your thumbs to push the two battery retaining tabs away from the battery.
- The battery should pop up enough to rotate it toward yourself and lift it out of the lower case.



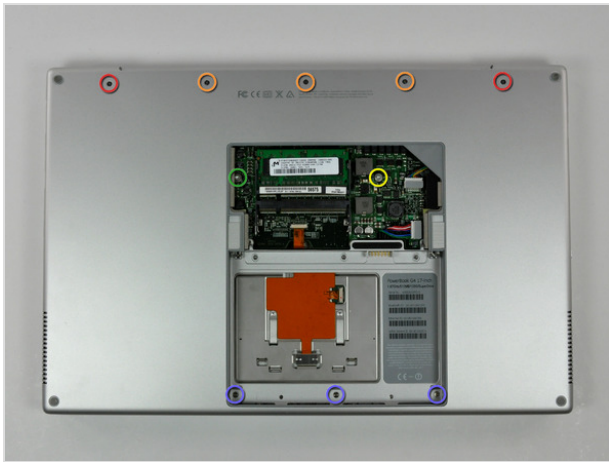
Step 2 — Memory Door

- Remove the three 2.3 mm Phillips screws securing the memory cover to the lower case.



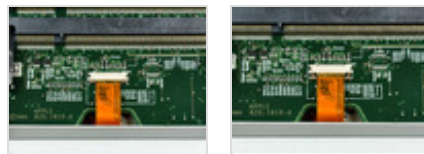
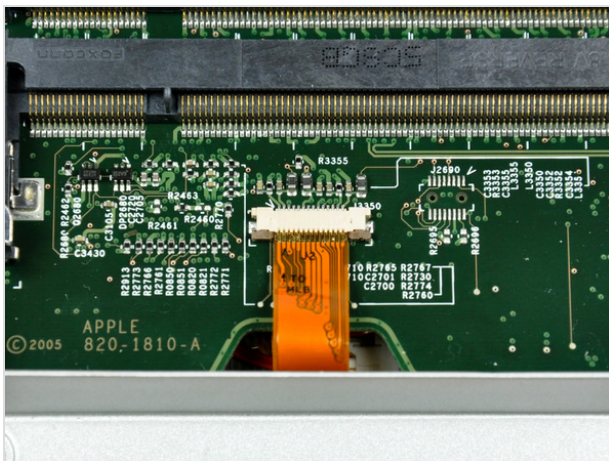
Step 3

- Lift the memory cover slightly and pull it toward yourself to remove it from the lower case.





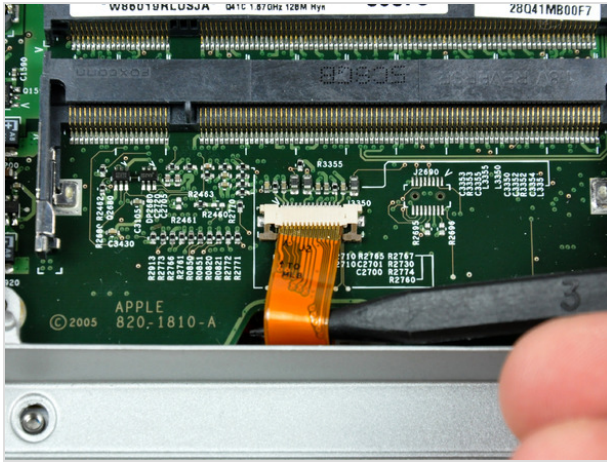
Step 4 — Upper Case

- Remove the following ten screws:
 - Two 14.7 mm shouldered Phillips.
 - Three 12.3 mm Phillips.
 - One 3.8 mm T8 Torx.
 - One 6.8 mm T8 Torx.
 - Three 1.3 mm Phillips.



Step 5

- The ZIF cable is located underneath the bottom RAM slot. If your PowerBook has both RAM slots occupied, make sure to [remove](#) the RAM chip. 
- Use your fingernails to separate the ZIF cable lock away from its socket. (Move the two brown bits down 1mm)
- The ZIF cable lock will move about a millimeter away from the socket before it stops (see picture 2). **Do not** try to remove the ZIF cable lock. 



Step 6

- Use the tip of a spudger to slide the trackpad ribbon cable out of its socket.



Step 7

- Remove the four 3.4 mm Phillips screws from the PC card side of the PowerBook.
- When replacing these screws, you must reinstall each screw in the correct order. Begin by installing the screw closest to the display hinge, and go out from there.



Step 8

- Remove the four 3.4 mm Phillips screws from the DVI connector side of the PowerBook.
- When replacing these screws, you must reinstall each screw in the correct order. Begin by installing the screw closest to the display hinge, and go out from there.
- During reassembly, make sure to reinstall the two screws on the right into their appropriate locations, and not the DVI port anchor holes.





Step 9

- Depress the display latch release button and open your display.



Step 10

- Starting near the display, lift the upper case straight up off the lower case, minding any cables that may get caught.



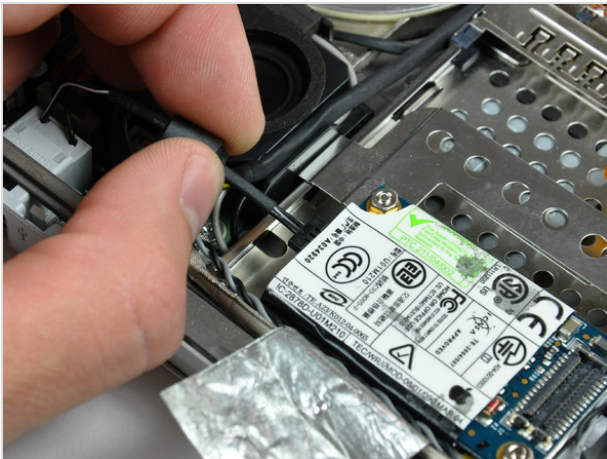
Step 11 — Modem

- If necessary, peel back the strip of aluminum tape covering the modem cable.



Step 12

- Use the flat end of a spudger to pry the modem cable connector up off the modem.



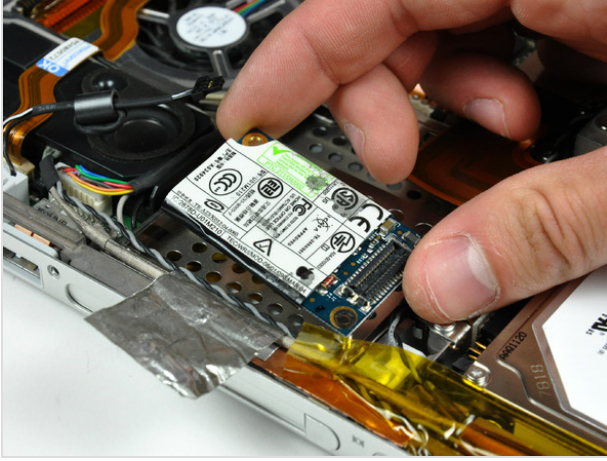
Step 13

- Disconnect the RJ-11 cable from the modem.



Step 14

- Use a 4 mm nut driver to remove the two nuts securing the modem to the PC card cage.



Step 15

- Lift the modem straight up off the studs on the PC card cage.

To reassemble your device, follow these instructions in reverse order.

This document was last generated on Feb 24, 2012.