



# Installing MacBook Unibody Model A1278 Battery

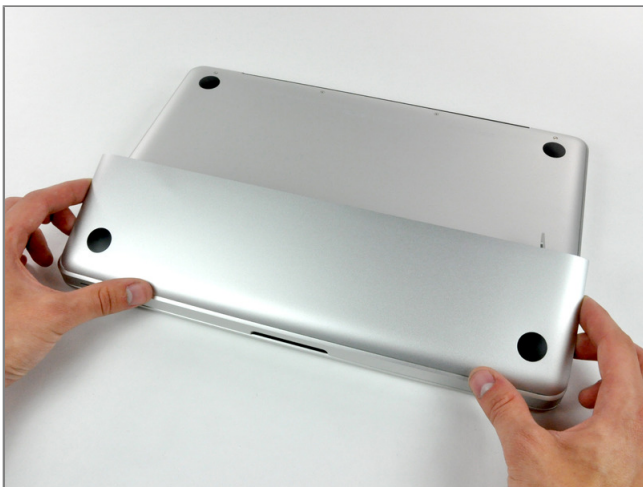
## Parts relevant to this guide

- [MacBook Unibody \(Model No. A1278\) Battery](#)



## Step 1 - Access Door

- With the case closed, place the Unibody top-side down on a flat surface.
- Depress the grooved side of the access door release latch enough to grab the free end. Lift the release latch until it is vertical.



## Step 2

- The access door should now be raised enough to lift it up and out of the Unibody.



## **Step 3 - Battery**

- Be sure the access door release latch is vertical before proceeding.
- Grab the white plastic tab and pull the battery up and out of the Unibody.

