



# Installing iPod Nano 2nd Generation Top Bezel

## Tools used in this guide

- [iPod Opening Tools](#)

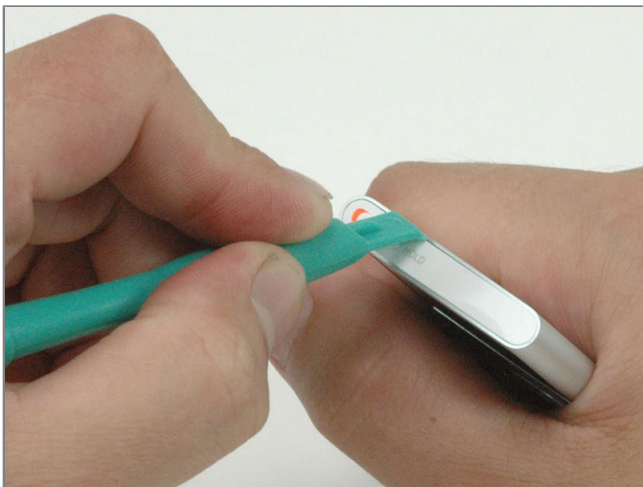
## Parts relevant to this guide

- [iPod Nano Gen 2 Top Bezel](#)



### Step 1 - Top Bezel

- Before opening your iPod, ensure that the hold switch is in the locked position.



### Step 2

- Carefully insert an iPod opening tool in the seam between the metal casing and white plastic top.
- Lift the top bezel off the iPod. It's glued on using a mild adhesive, so some force may be required.