



# Installing PowerBook G4 Aluminum 15" 1.5-1.67 GHz Battery

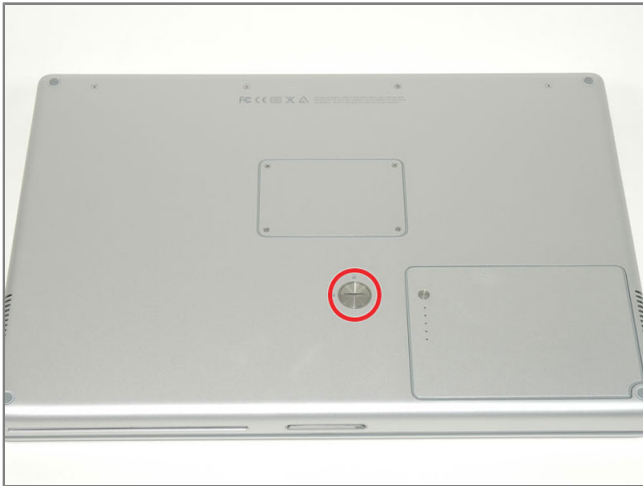
## Tools used in this guide

- [Coin](#) (1)

## Parts relevant to this guide

- [G4 Aluminum 15" Battery](#) (1)

Changing the battery is easy -- all you need is a coin.



### ***Step 1 - Battery***

- Use a coin to turn the battery locking screw 90 degrees clockwise.
- Lift the battery out of the computer.

To reassemble your device, follow these instructions in reverse order.

This document was last generated on Dec 14, 2010.