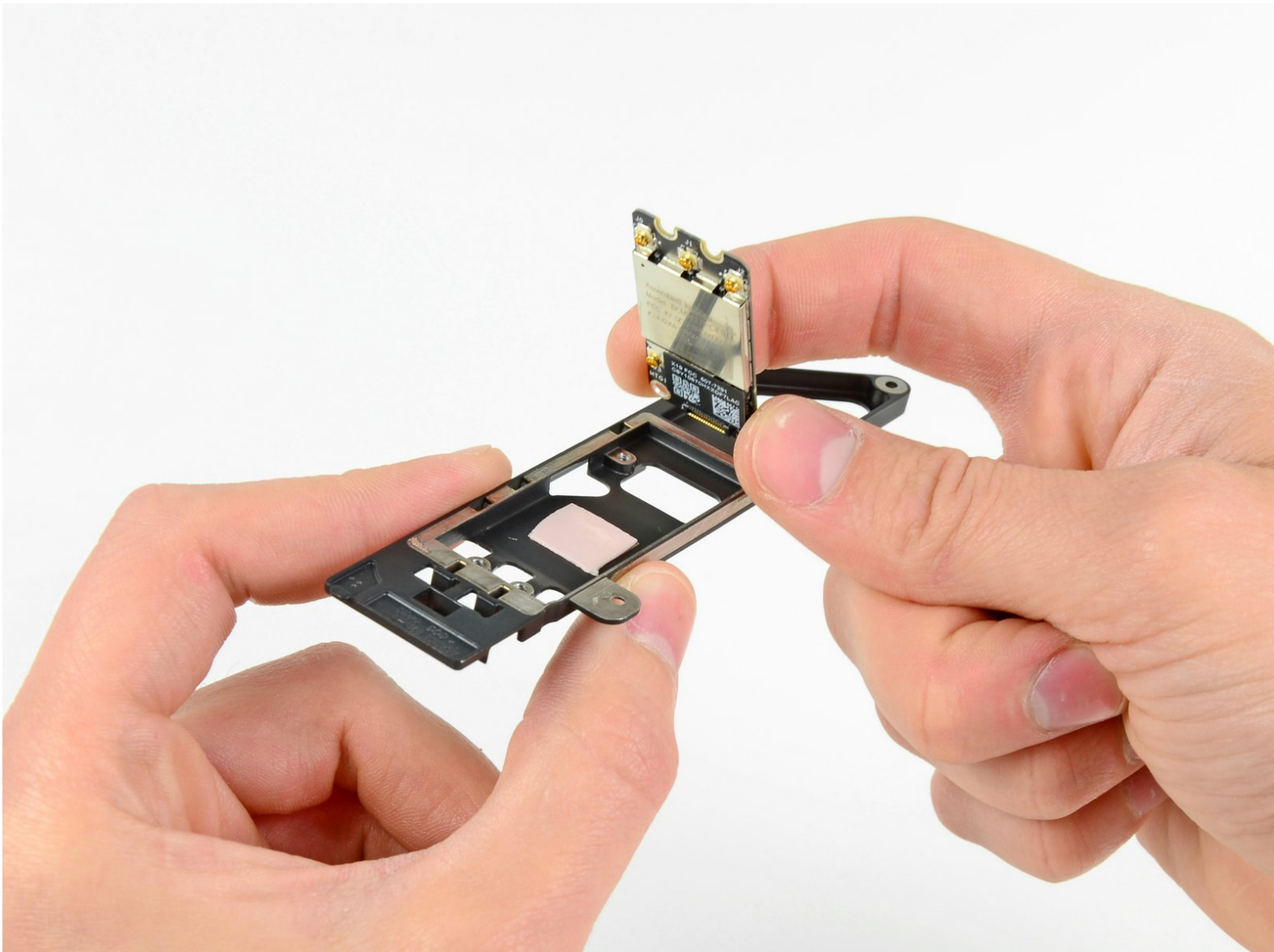




# MacBook Pro 15" Unibody Early 2011 AirPort/Bluetooth Board Replacement

Replace the AirPort/Bluetooth board on your Early 2011 MacBook Pro 15" Unibody.

Written By: Walter Galan



# INTRODUCTION

Wireless connectivity issues? Use this guide to replace an inoperative AirPort/Bluetooth board.



## TOOLS:

- [Phillips #00 Screwdriver](#) (1)
- [Spudger](#) (1)



## PARTS:

- [MacBook Pro 15" Unibody \(Early 2011\) Airport/Bluetooth Bracket](#) (1)
- [MacBook Pro Unibody \(Early 2011/Late 2011/Mid 2012\) Airport/Bluetooth Board](#) (1)

## Step 1 — Lower Case



- Remove the following ten screws securing the lower case to the upper case:
  - Three 13.5 mm (14.1 mm) Phillips screws.
  - Seven 3 mm Phillips screws.

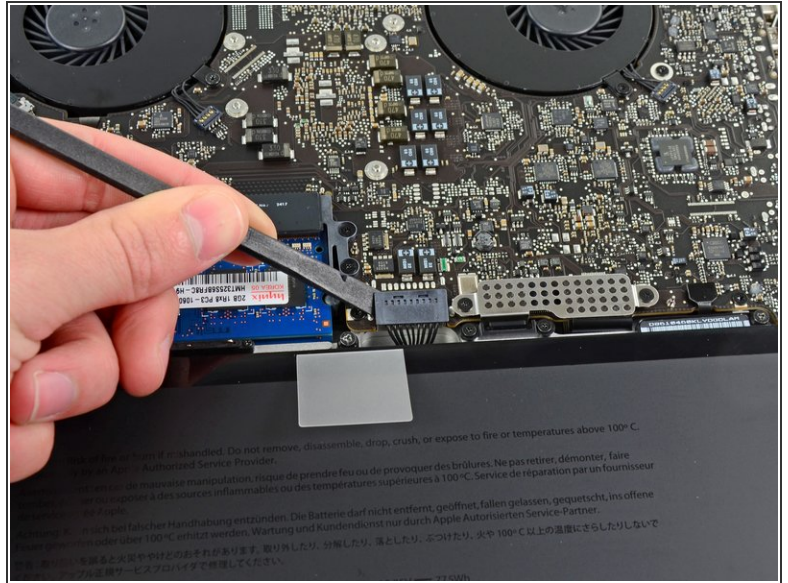
★ When removing these screws, note how they come out at a slight angle. They must be reinstalled the same way.

## Step 2



- Using both hands, lift the lower case near the vent to pop it off two clips securing it to the upper case.
- Remove the lower case and set it aside.

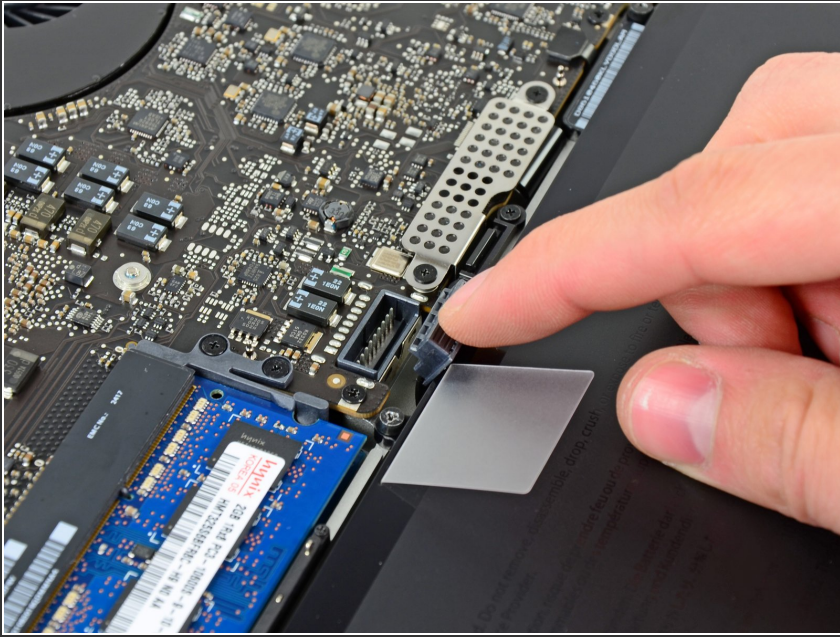
## Step 3 — Battery Connector



- ☑ For certain repairs (e.g. hard drive), disconnecting the battery connector is not necessary but is recommended as it prevents any accidental shorting of electronics on the motherboard. If you do not disconnect the battery connector, please be careful as parts of the motherboard might be electrified.
- Use the edge of a spudger to pry the battery connector upwards from its socket on the logic board.
- ℹ It is useful to pry upward on both short sides of the connector to "walk" it out of its socket.



## Step 4



- Bend the battery cable slightly away from its socket on the logic board so it does not accidentally connect itself while you work.

## Step 5 — AirPort/Bluetooth Board Assembly



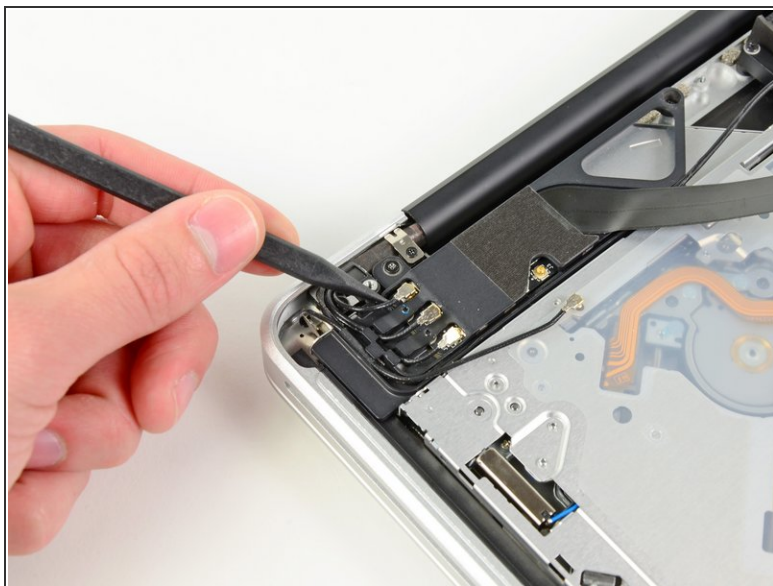
- Pull the camera cable connector straight out of its socket on the logic board.
- ⓘ Pull the cable parallel to the face of the logic board toward the optical drive opening.

## Step 6



- Use the flat end of a spudger to carefully pry the AirPort/Bluetooth ribbon cable up off its socket on the logic board.

## Step 7



- Use the tip of a spudger to pry the four antenna connectors up from their sockets on the AirPort/Bluetooth board.

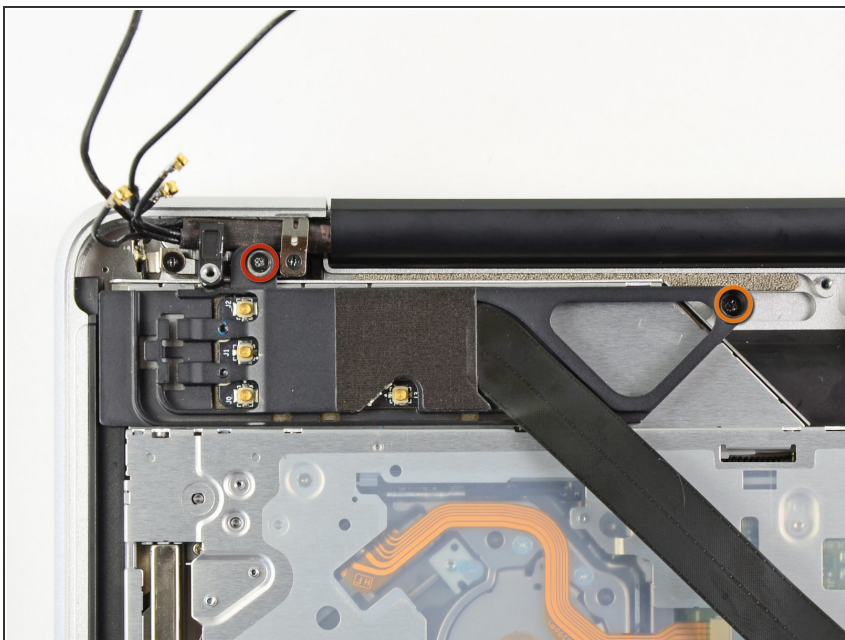


## Step 8



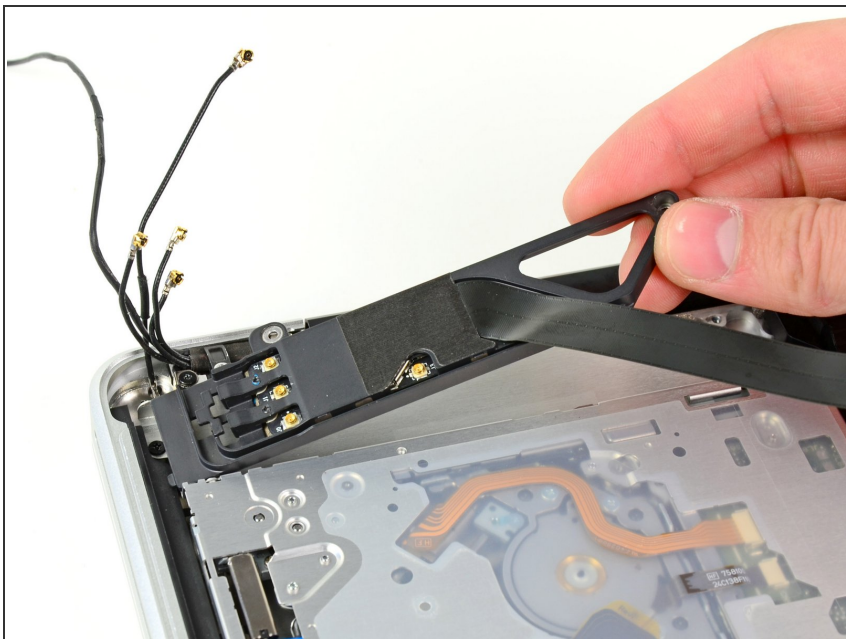
- De-route all four antenna cables from their channels in the AirPort/Bluetooth housing.
- De-route the camera cable from its channel in the AirPort/Bluetooth housing.

## Step 9



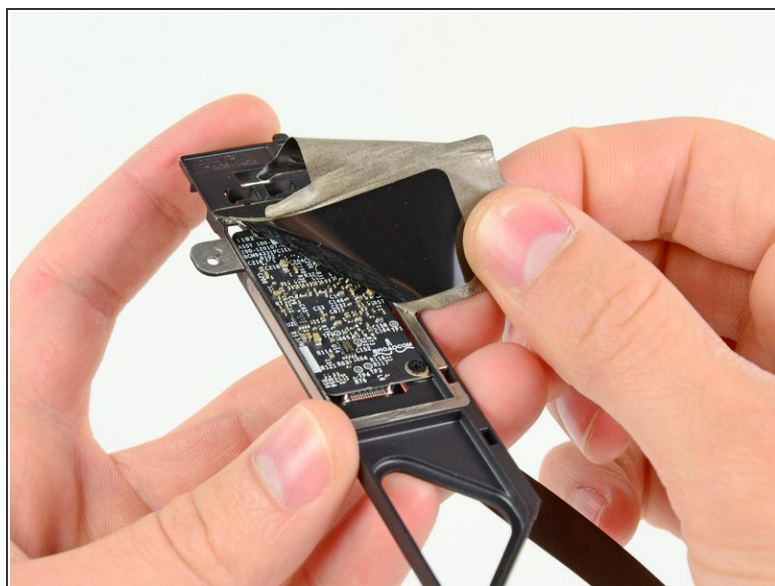
- Remove the following two screws securing the AirPort/Bluetooth assembly to the upper case:
  - One 8.6 mm Phillips screw
  - One 3.9 mm Phillips screw

## Step 10



- Remove the AirPort/Bluetooth assembly from the upper case, minding any cables that may get caught.

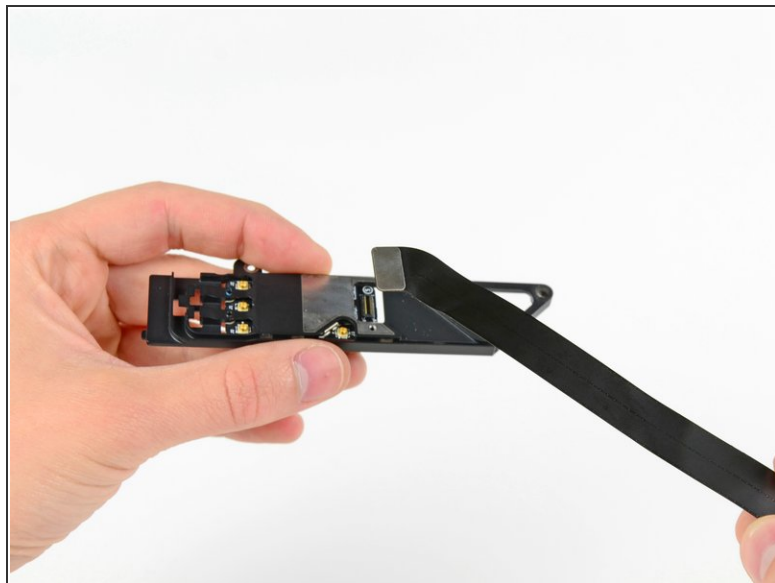
## Step 11 — AirPort/Bluetooth Board



- Peel and remove the piece of EMI tape wrapped around the AirPort/Bluetooth assembly.

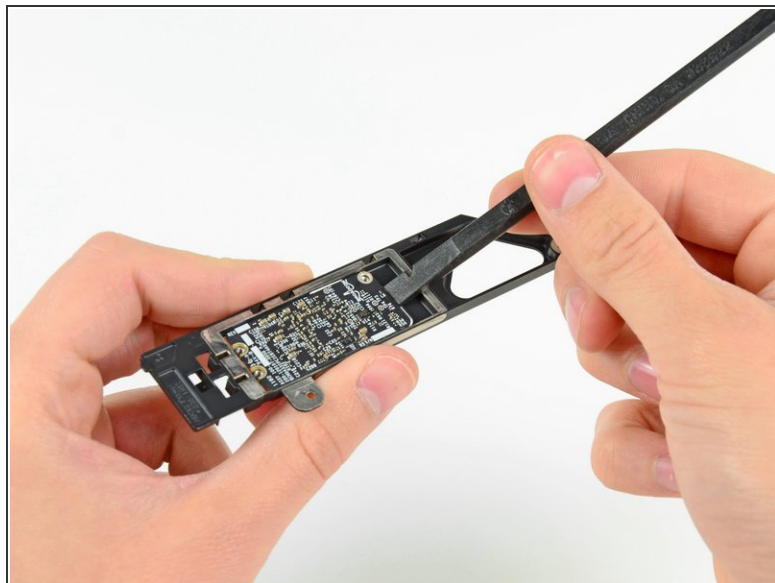
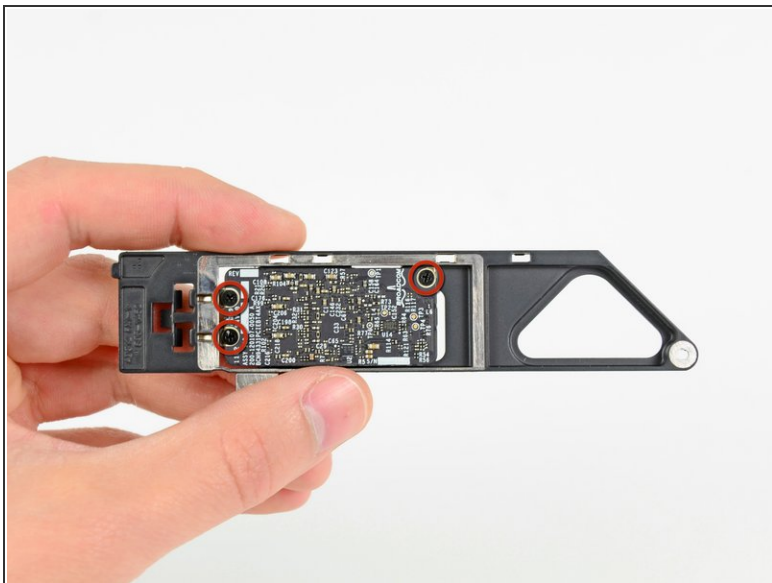


## Step 12



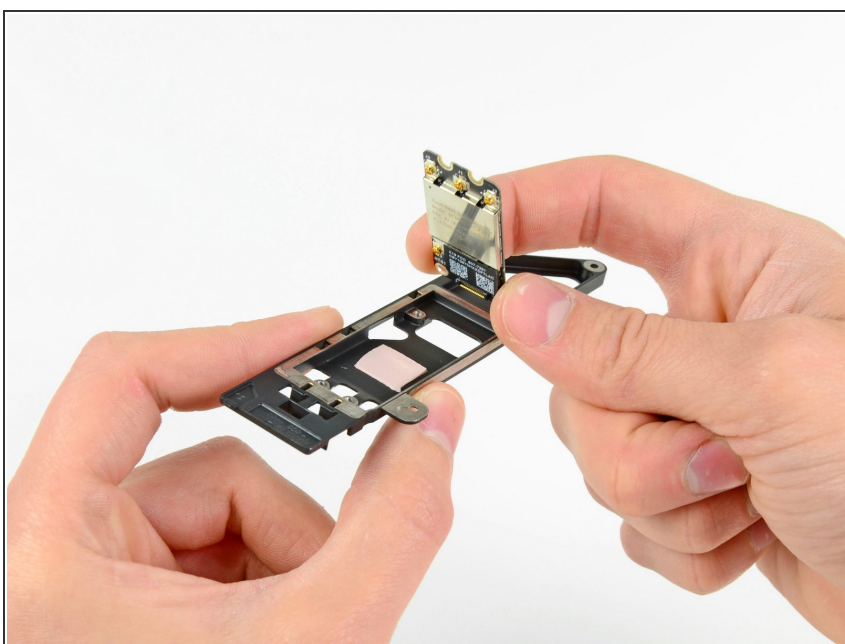
- Use the flat end of a spudger to pry the AirPort/Bluetooth cable away from its socket on the AirPort/Bluetooth board.
- Remove the AirPort/Bluetooth cable from the AirPort/Bluetooth assembly.

## Step 13



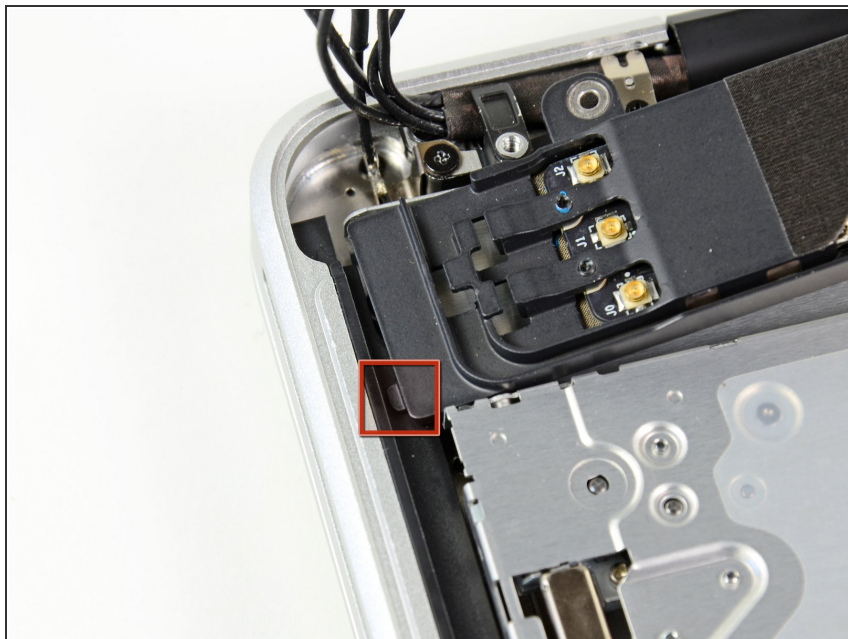
- Remove the three Phillips screws securing the AirPort/Bluetooth board to the AirPort/Bluetooth board housing.
- Use the flat end of a spudger to dislodge the AirPort/Bluetooth board from its recess in the AirPort/Bluetooth board housing.

## Step 14



- Remove the AirPort/Bluetooth board from its aluminum housing.

## Step 15



- ✦ Before securing the AirPort/Bluetooth bracket to the upper case, be sure the small tab on its left edge is inserted into the small void cut into the black plastic optical drive opening.

To reassemble your device, follow these instructions in reverse order.