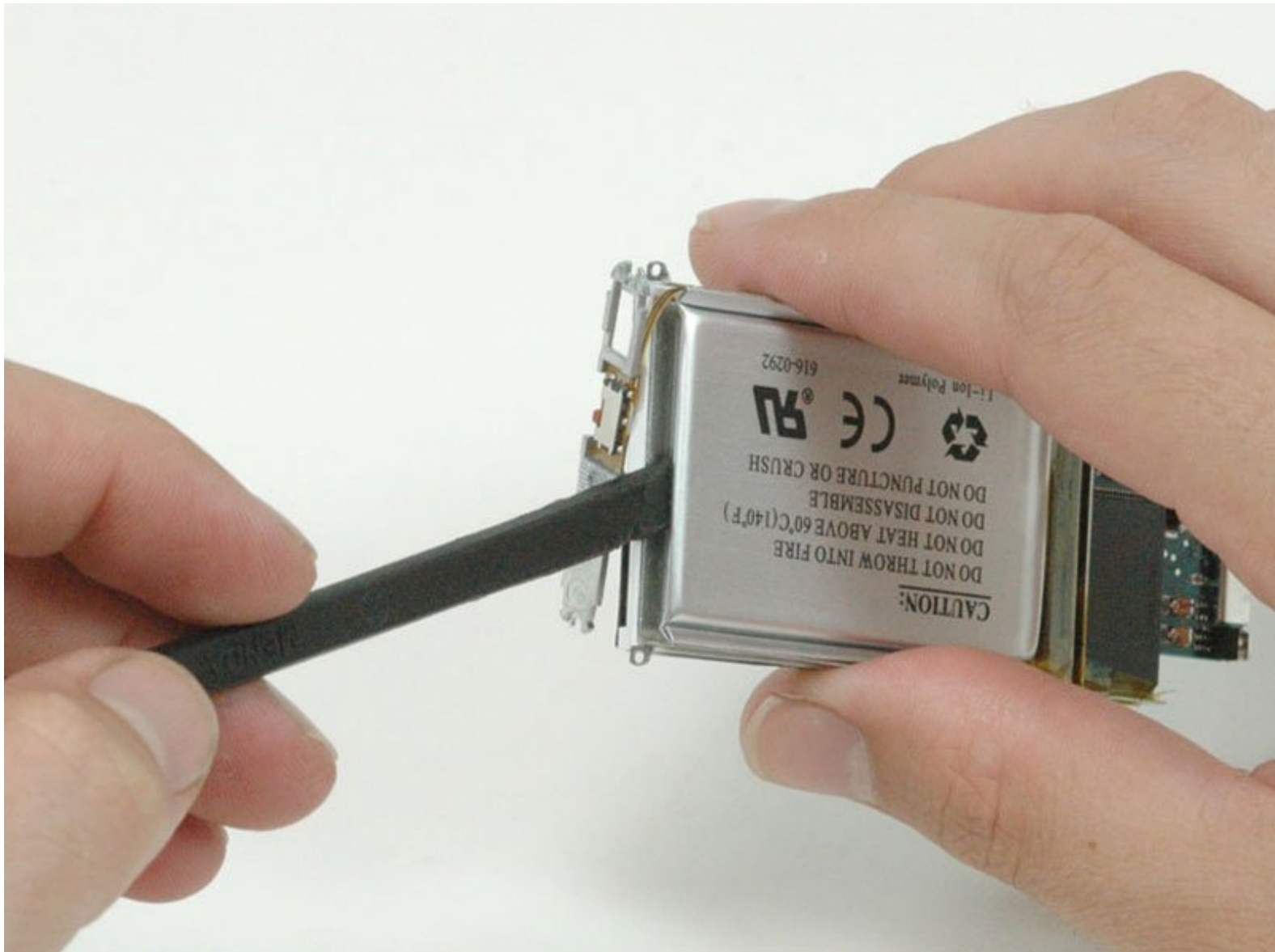




# iPod Nano 2nd Generation Display Replacement

Replace a cracked or faulty display.

Written By: iRobot



---

# INTRODUCTION

Replace a cracked or faulty display.



## TOOLS:

- [iFixit Opening Tool](#) (1)
- [Metal Spudger](#) (1)
- [Phillips #00 Screwdriver](#) (1)
- [Spudger](#) (1)



## PARTS:

- [iPod nano \(2nd Gen\) Color Display](#) (1)
-

## Step 1 — Case Assembly



- ❗ Before opening your iPod, ensure that the hold switch is in the locked position.

## Step 2



- Carefully insert an iPod opening tool in the seam between the metal casing and white plastic top.
- Lift the top bezel off the iPod. It's glued on using a mild adhesive, so some force may be required.

### Step 3



**⚠ When removing the bottom bezel, be sure not to bend the plastic surrounding the dock connector.**

- Carefully insert an iPod opening tool in the seam between the metal casing and white plastic bezel.
- Lift the bottom bezel off the iPod. It's glued on using a mild adhesive, so some force may be required.

### Step 4



- Remove the following two screws:
  - One #00 Phillips screw with a large head near the headphone jack.
  - One #000 Phillips screw with a smaller head near the side of the iPod. This screw strips easily, so be sure to press down firmly on the screwdriver.



## Step 5



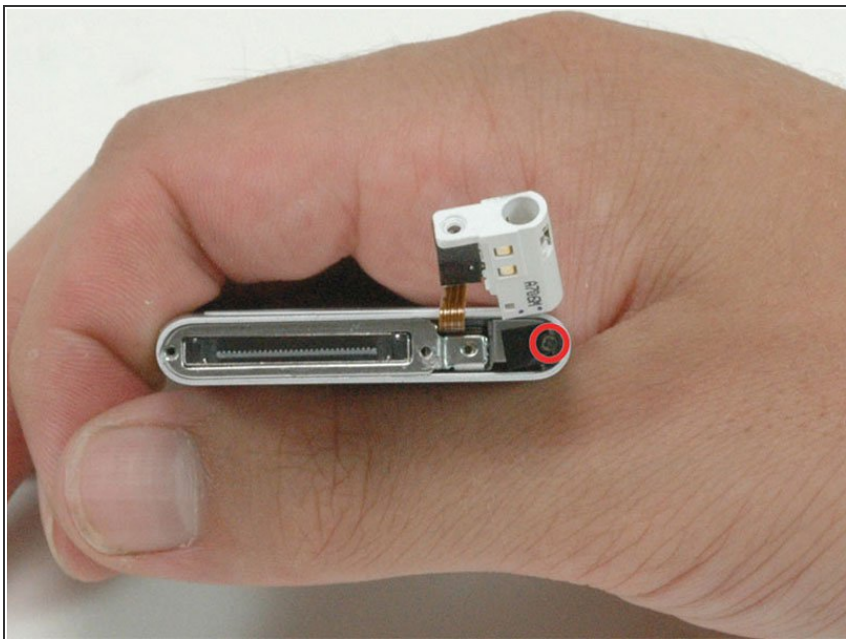
- Use a metal spudger to carefully pry the headphone jack out of the casing. **DO NOT** remove the headphone jack from the iPod entirely, as it is connected via a fragile ribbon connector to the click wheel.

## Step 6



- Slide the headphone jack out until the white plastic housing is no longer held in place by the metal casing.

## Step 7



- Remove the newly-revealed Phillips #00 screw from beneath the headphone jack. Be careful, this screw is easily stripped.

## Step 8



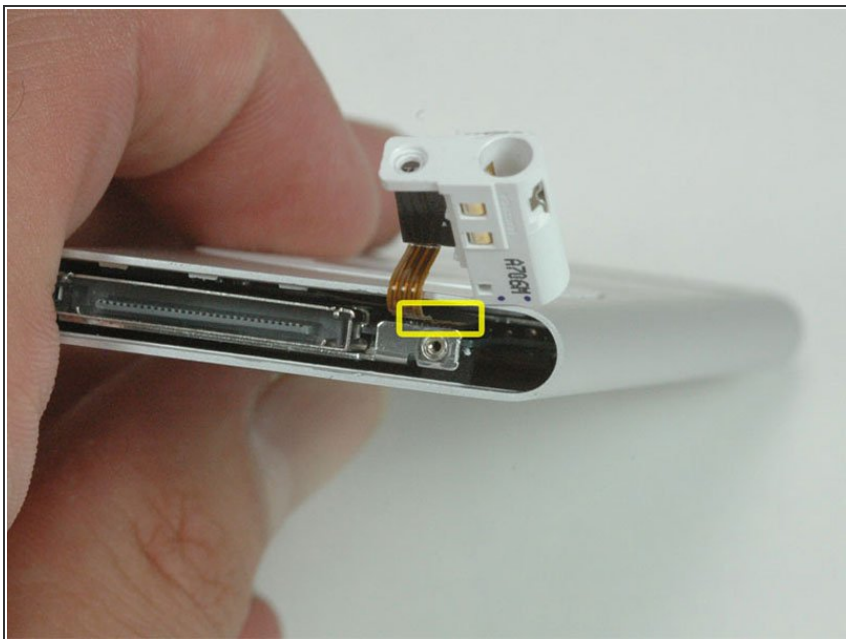
- Lift the bottom bezel bracket out of the iPod.

## Step 9



- Remove the two Phillips #00 screws from the top of the iPod.

## Step 10



- ⓘ The highlighted connector attaches the click wheel and headphone jack to the logic board. This cable must be disconnected from the logic board before continuing.

## Step 11



- Use a spudger to disconnect the headphone jack cable from the logic board. You need to gently pry the connector toward (or up, if you like, the connector is like LEGO® building blocks) the front of the iPod until it comes loose from the logic board.



- Special hint for the reassembly:  
Push the connector inside until it is over the corresponding connector of the logic board. Then insert a thin tool over the connector and push it down onto the logic boards connector.

## Step 12



- Use a spudger to push the logic board through the iPod out of the casing. The click wheel and headphone jack should remain in the iPod.
- ⚠ Be careful not to catch the headphone jack and click wheel on the logic board as you remove the logic board and display.

## Step 13



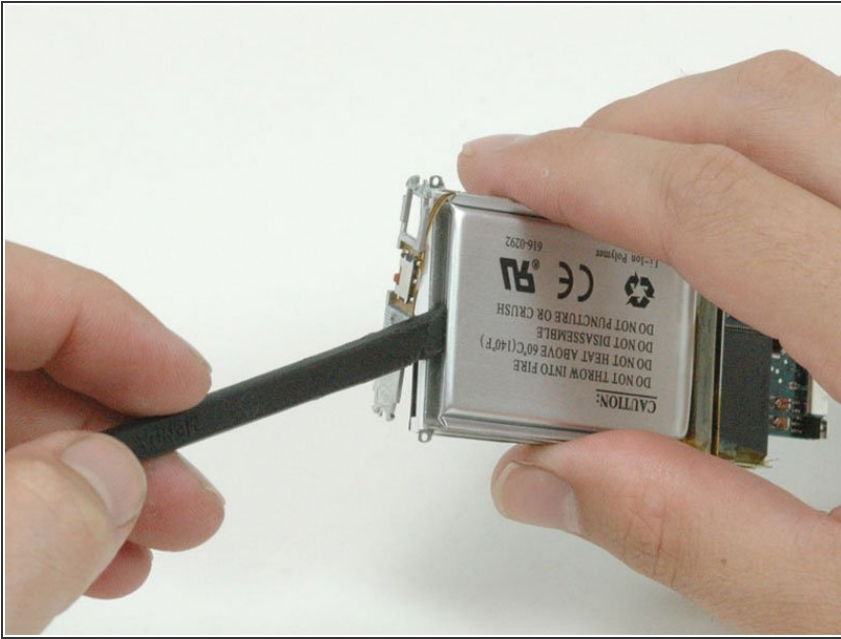
- When removing the logic board, place the tip of the spudger into the hole where you removed the screw and gently push it out. The crevice will keep it in place and decrease the chance of you damaging your board.

## Step 14



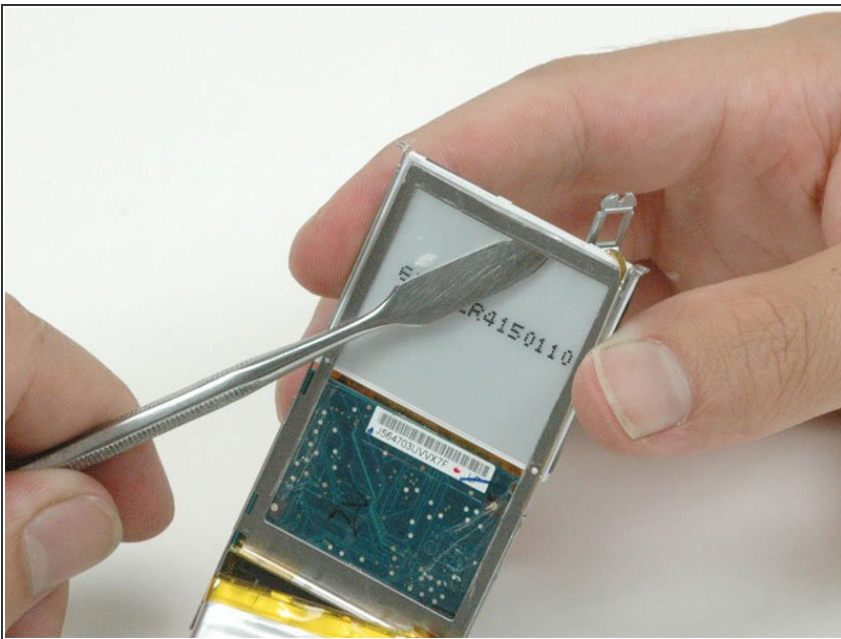
- Completely remove the display and logic board from the metal casing.
- When reassembling, ensure that the battery is well seated. If the fit is too tight, the edge of the display will score the inside of the screen window.

## Step 15 — Display



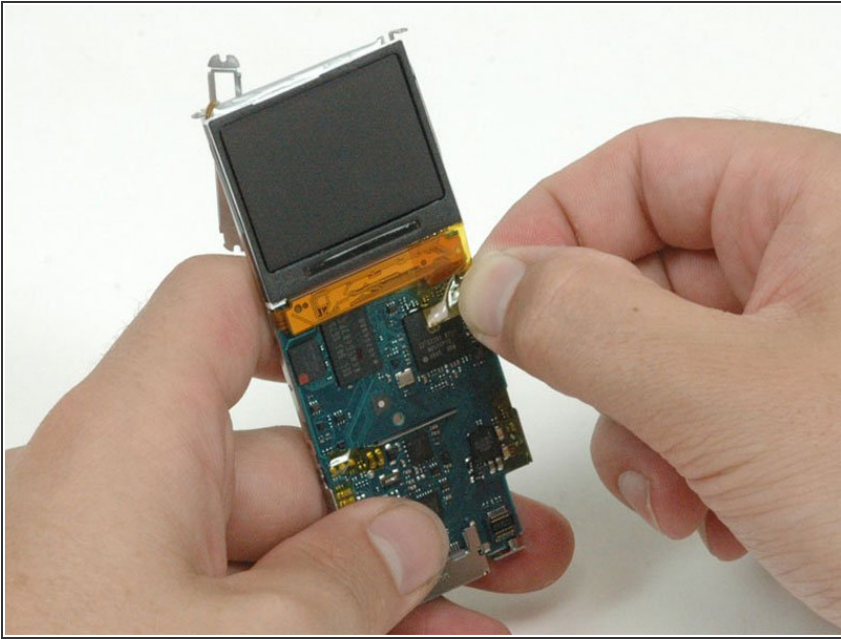
- Use a spudger to gently pry the battery up from the back of the display. Be careful not to put too much pressure on the display with your spudger.

## Step 16



- Use a metal spudger to carefully pry the metal bracket off the back of the display. Make sure you only pry off the bracket and not the clear shielding on the rear of the display. By working from the inside of the display, you won't be able to accidentally pry up the clear plastic shielding.

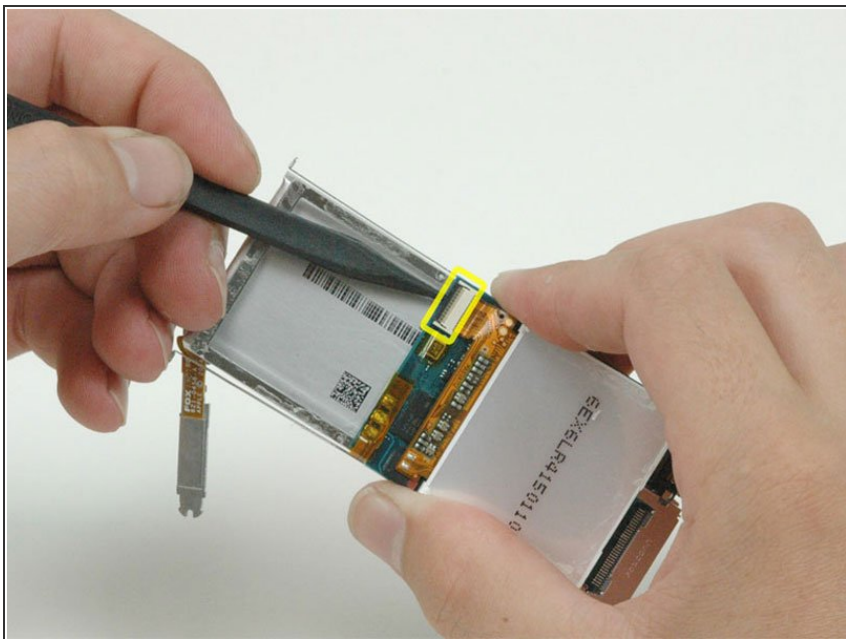
## Step 17



- Peel up the orange tape covering the display ribbon cable.

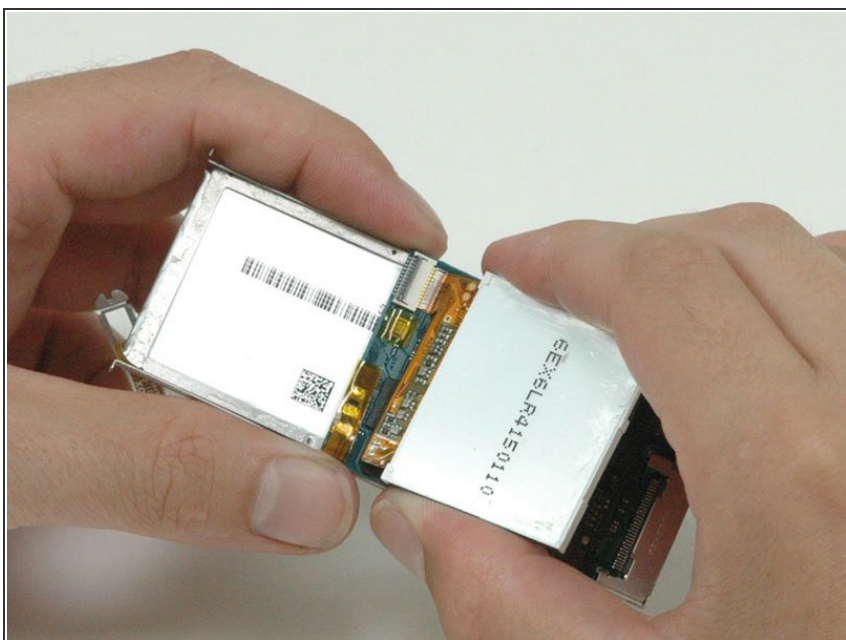


## Step 18



- Use a spudger to flip up the black plastic tab holding the orange display ribbon in place. The tab will rotate up 90 degrees, releasing the ribbon cable.

## Step 19



- Slide the display ribbon out of its connector and lift the display off of the logic board.

To reassemble your device, follow these instructions in reverse order.